

Venue Snapshot

WPC - Community Room 2



Special Conditions:	✓ - Alcohol permitted with conditions
Room Dimensions:	9m x 6.6m
Room Capacity: Theatre Layout Classroom Layout Boardroom Layout Active Class Standing/Cocktail N.B Please see layout diagrams next page	People 25 20 16 12 30

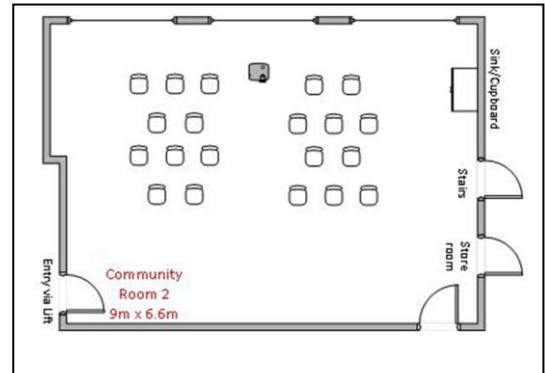
✓ = available at this venue x = not available at this venue
\$ = available for hire at this venue (fees apply)

Amenities	Kitchen/Catering	Technology	Equipment/Furniture
✓ Disabled access	x Kitchen - Full	\$ Audio Visual system	✓ Tables - Full Trestle Size (4)
x Outdoor area	✓ Kitchenette - sink & hot water	✓ Amplifier	x Tables - Childrens Size
x Outdoor area - with playground equipment	x Tea/Coffee Crockery - Dry Hire	x Projector - Inbuilt	✓ Seating - Chairs - Adult size (30)
✓ Air conditioning	x Luncheon Crockery - Dry Hire	\$ Projector - Portable	x Seating - Chairs - Childrens Size
✓ Heating	x Cutlery - Limited	✓ Projector screen	x Seating - Couch or arm chairs
x Ceiling Fans	x Water glasses	x Computer/PC	x Piano
x Electric Fans	x On site Café	x Whiteboard - Inbuilt	x Table Tennis Table
✓ Parking	x On site Catering	x Whiteboard - Electronic	x Pool Table
✓ Disabled parking	x Oven	✓ Whiteboard Portable	x Gym Equipment
✓ Toilet facilities (internal)	x Stove	x WiFi	x Portable partitions
✓ Toilet facilities (external)	x Microwave	x Lectern	x Trolley - Upright
✓ Accessible toilet	x Dishwasher	✓ Projector trolley	✓ Bins
x Shower Facilities	x Fridge - Full size		
x Storage	x Fridge - Bar fridge size		Flooring
x Basketball/Futsal Courts	✓ Hot Water - Kettle		Flooring - Carpeted
x Stage	x Hot Water - Zip System		Flooring - Dance Floor
✓ Powerpoints	x Hot Water - Electric Urn		✓ Flooring - Vinyl Floor
			Flooring - Polished Timber

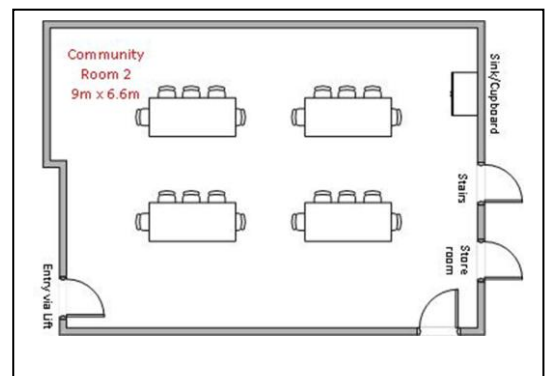
Venue Snapshot

WPC - Community Room 2

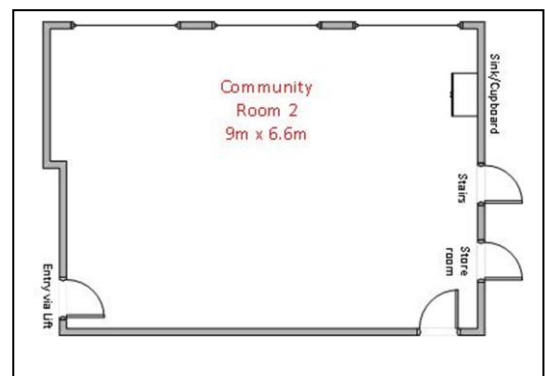
Theatre Layout



Classroom Layout



Standing/Active Layout



Boardroom Layout

