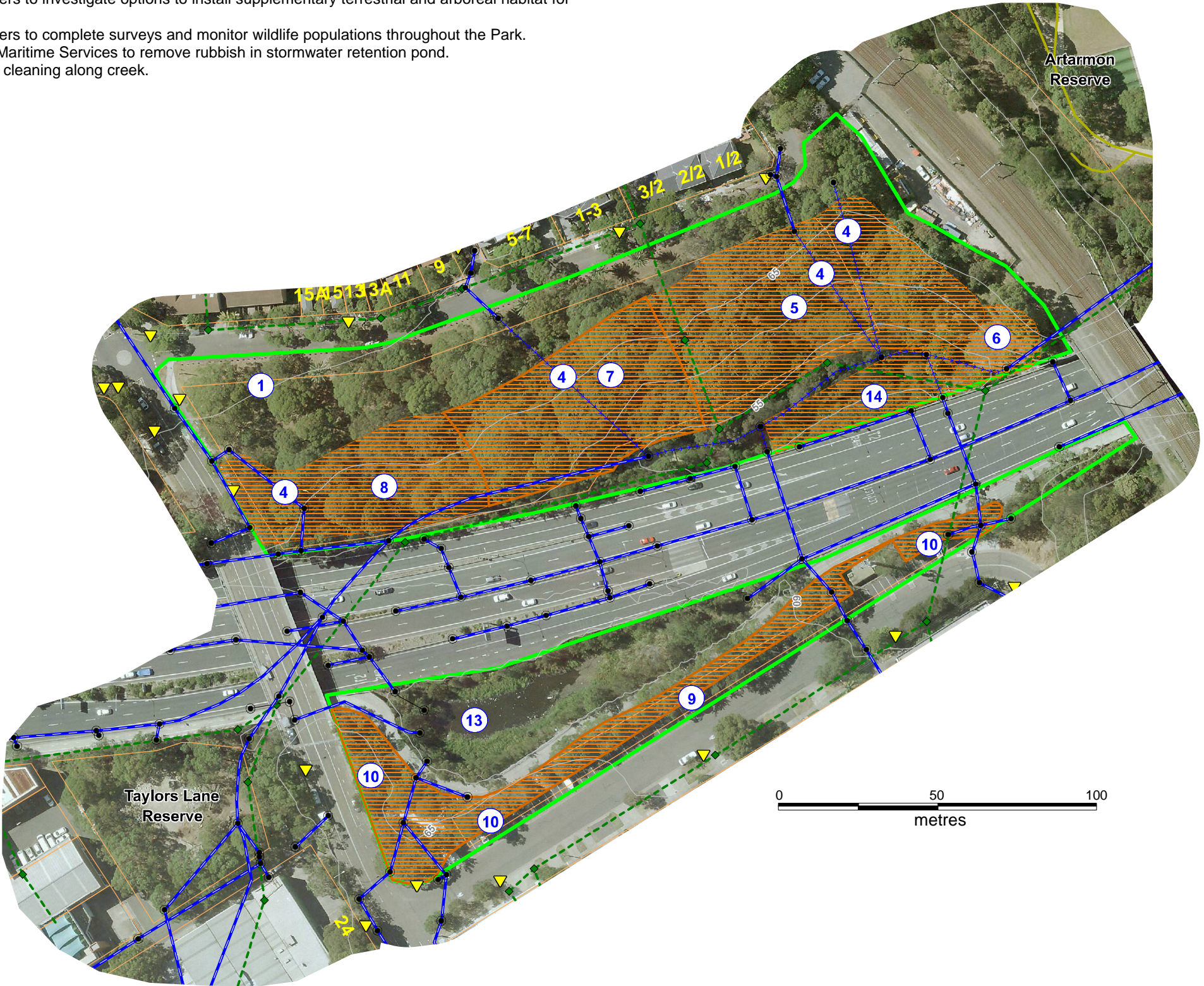
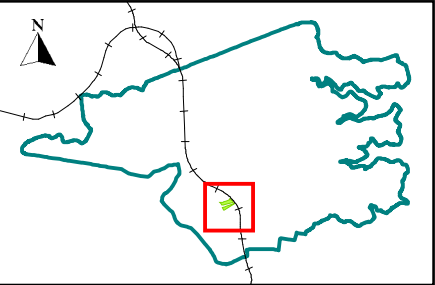


Artarmon Park Bushland Actions

1. Investigate options to install an interpretive sign demonstrating the importance of this Park as a wildlife corridor and how it links wildlife to larger bushland reserves within the region.
2. As aging bollards along Parkes Road disintegrate investigate options to replace with indigenous trees like Turpentine. Potential tree plantings will be spaced widely apart and possibly combined with some small shrubs and groundcovers.
3. Bushland Regeneration Contractor to define the edge between grass and bushland using logs where appropriate.
4. Monitor the condition of all stormwater lines within the Park and complete repair work where necessary. Weeds that have accumulated in stormwater lines will have routine maintenance sweeps completed by bushland regeneration contractors to remove vegetation and excess sedimentation.
5. Bushland regeneration contractor to target heavily infested areas of Privet and Lantana particularly around stormwater lines. These weeds will require gradual removal to retain habitat values and to restrict new weeds establishing. Regular maintenance sweeps will be required after initial removal and possible infill native plantings may be required to stabilise the slope and create wildlife habitat.
6. Bushland Regeneration Contractor to complete primary weed removal targeting weed vines Honeysuckle and Morning Glory below the advertising billboard.
7. Bushland regeneration contractor to complete maintenance sweeps in stable area previously worked targeting weed vines, ground covers and annuals. Native Water Vine (Cissus hypoglauca) should be maintained to current area so it does not spread and dominate other native species. Infill native plantings may be required in sections to strengthen the understorey and screen sight of the freeway.
8. Bushland regeneration contractor to complete primary and secondary weed removal targeting Lantana, Camphor Laurel, Privet, Morning Glory and Trad. Removal is required in stages to avoid exposing views of the Freeway. Infill native plantings will be required in sections to encourage regeneration and screen the Freeway. Regular maintenance sweeps will be required after initial work.
9. Bushland Regeneration Contractor to complete maintenance sweeps targeting the removal of Cape Broom, Boston Ivy, London Plane Tree, Creeping Fig and annuals along with rubbish collection in area along the shared path.
10. Bushland regeneration contractor to plant native shrubs and ground covers in sections along the shared path to improve local amenity. Durable species will be planted due to exposure and potential high impacts. Follow-up watering and maintenance is required.
11. Willoughby City Council wildlife officers to investigate options to install supplementary terrestrial and arboreal habitat for native wildlife in the Park.
12. Willoughby City Council wildlife officers to complete surveys and monitor wildlife populations throughout the Park.
13. Investigate options with Roads and Maritime Services to remove rubbish in stormwater retention pond.
14. Contractors to conduct periodic litter cleaning along creek.



RESERVE ACTION PLAN
ARTARMON PARK



Plan details

Status: Final
Prepared by: N. Yu
Drawn by: N. Prasad
Date printed: 29/08/2022
Approximate Scale: 1:1500 on A3

Legend

- 15 Property number
- 12 Action plan activity
- Stormwater node
- ▼ Approximate fire hydrant location
- 35 5m contours
- Stormwater network - Underground *
- - - Stormwater network - Overground / Unknown *
- Property boundary
- ▨ Council bush regeneration contractors

* The accuracy of this data is not guaranteed and must be verified prior to use.

References

V:\PROJECTS\MANAGEMENT PLANS\RESERVE ACTION PLANS\
ARTARMON PARK RAP 2016\MAPINFO\Workspaces\
Artarmon Park RAP 2016.wor

Artarmon Park Reserve Action Plan

Reserve Profile

Artarmon Park is a small local reserve approximately 2.3 hectares in size that is divided in two by the Gore Hill Freeway. It consists of bushland and an open recreational grass area to the north of the Freeway and a stormwater retention pond, garden beds and a shared bicycle/walking path to the south. Management of the Park is divided between Willoughby City Council and Roads & Maritime Services.

Flat Rock Creek begins within Artarmon Park and is fed by underground stormwater pipes coming from nearby residential streets, the freeway and streets from the Artarmon Industrial Area. It starts as an open concrete culvert and then continues underground in pipes through to Artarmon Reserve. Artarmon Park is located in the Flat Rock Creek catchment which is part of the larger Middle Harbour water catchment.

Previously the Park was part of a larger 19 hectare reserve until 1900 when the northern section was subdivided for housing, and the remaining land was gazetted as Artarmon Park on 11 August 1900. The Park underwent major changes during the late 1980s through to 1992 with the construction of the Gore Hill Freeway which reduced and altered the park size by approximately half. Further changes and a reduction in the size occurred between 2004 and 2007 with the construction of the Lane Cove Tunnel.

PLANT COMMUNITY: Artarmon Park is classified as Coastal Enriched Sandstone Moist Forest [S_WSF02] with dominant species being *Eucalyptus pilularis* and *Syncarpia glomulifera*. These two species form a dense tree canopy along with *Pittosporum undulatum*. The understory is disturbed in sections with weed infestations of Privet and Lantana which reduce the amount of available space for native plants. In areas where large amounts of weeds have been removed infill planting of natives has been completed to re-establish the mid-storey and ground layers. These areas are beginning to become stable but still require maintenance weeding. To reduce the visual impact of past disturbances like the construction of the freeway, there have been replacement plantings. These plantings have been effective to screen the freeway from houses however the species used have not always been local indigenous plants. Some species particularly Allocasuarina have flourished and are now a problem in sections and require gradual removal.

HABITAT: The varied mix of vegetation forms including tall trees provide habitat for large and small birds and mammals. There are large rock ledges and outcrops that provide habitat for reptiles and invertebrates.

Statement of Significance

Artarmon Park is classified as bushland as defined in State Environmental Planning Policy No 19 ("Vol 1, 1.4), and is protected under State and Commonwealth Legislation ("Vol 1, 1.5.2). It is zoned RE1 Public Recreation in the Willoughby Local Environment Plan (WLEP) 2012.

ABORIGINAL CULTURAL SIGNIFICANCE: There are no recorded Aboriginal cultural sites in Artarmon Park.

NATURAL HERITAGE SIGNIFICANCE: While Artarmon Park is a relatively small bushland reserve it plays a significant role as a wildlife corridor linking other larger bushland areas within the Willoughby local government area and beyond. The Park is centrally located in Willoughby and is a link between the larger Middle Harbour bushland reserves of Flat Rock Gully, Northbridge Park and the Castlecrag network and also with the large Lane Cove River reserves of Ferndale and Mowbray Park. The Park also links to important bushland reserves within the Lane Cove area. These linkages are significant as they allow the migration of plants and animals throughout this highly urbanised and fragmented landscape and help to maintain local biodiversity.

HISTORIC CULTURAL SIGNIFICANCE: Artarmon Park was named after Ardtelmon (or 'Artramon') Castle, the Irish home of William Gore

Gore owned land in the area including a large reserve extending from Gore Hill to Artarmon, of which Artarmon Park was a part. The construction of the railway in the late 1880s separated Artarmon Park from Artarmon Reserve. The Park is adjacent to Artarmon Reserve however it is divided by the train line. Taylor Lane Reserve is adjacent on the other side but is divided by Hampden Road.

Reserve Impacts

Artarmon Park is located in an urbanised area adjacent to medium density residential housing and also general and light industrial areas. Its close proximity to these areas often results in illegal vegetation dumping occurring, particularly along the Punch Street boundary.

Grass along Parkes Road is a designated dog off-leash area so there is potential for dogs to enter bushland and disturb wildlife.

There are numerous stormwater lines running into and through the Park with the sloping terrain that have concentrations of weeds. Regular maintenance weed removal is required to ensure that weeds do not spread further into the Park. The lines entering the Park south of the Gore Hill Freeway collect contaminants from roads including the freeway and accumulate in the retention pond. Further water testing is required to determine the water quality and impacts to wildlife. Tall tree cover should be minimised around the pond to maximise ultraviolet water treatment.

On the eastern boundary next to the railway line there is a large advertising billboard. Sydney Rail contractors regularly cut back vegetation below this billboard to ground level to retain views.

ENCROACHMENTS: There are no known encroachments.

Wildlife Habitat Issues

The size of the Park means that the amount of core habitat available for wildlife is quite small. Combine this with the urban location and that the Gore Hill Freeway runs through the middle means that only highly urbanised species will be found here. Noise and light pollution is an issue from the freeway that restricts the type of wildlife using the Park.

The open recreational grass area is designated as a dog off-leash area and there is potential for dogs that are not being actively watched by their owners to stray into adjacent bushland.

As mentioned previously, Artarmon Park is significant for its ability to provide a passage for wildlife to move between larger bushland reserves located mainly to the east and west. Habitat values within the Park should be maintained for opportunistic species, however the real value is that it allows wildlife to move freely to large bushland areas.

Achievements

An extensive program of weed removal particularly of Trad and Fishbone Fern combined with native plantings in degraded areas where natural regeneration is not possible has helped to re-establish a stable understory and ground layer. Past work has been focussed in the core central bushland area and is now starting to move outwards from here.

Small pile burns have been completed to stimulate native plant regeneration with success in core bushland areas.

Bushland Management Goals – Artarmon Park

This bushland reserve action plan for Artarmon Park has identified the following management aims from the Urban Bushland Plan of Management 2014 policy as priority objectives:

- 6.2 c - Maintain genetic integrity of native plant communities;
- 6.2 e - All management of vegetation will have regard to habitat values;
- 6.2 f - To preserve and increase ecological links across the LGA and regionally to assist the movement of fauna;
- 6.2 g - Maintain natural habitat formations and supplement with manufactured structures where natural habitat has been depleted;

- 6.3 b - To implement weed control programs which are based on regeneration and restoration principles and which increase the bushland resilience to further weed infestation;
- 6.3 c - To implement measures to control and manage existing and future weed infestations based on addressing the causes and sources of the infestation.

General Principles and Actions – All Bushland Reserves

- a. Bush regeneration is a long term process that requires staged weed removal to ensure establishment of native plant communities. Work should proceed from good to degraded areas with techniques that encourage regeneration, including flame weeding, rather than spraying herbicide.
- b. If possible, all weed refuse and natural debris to be composted or retained on-site.
- c. When natural regeneration is deemed inadequate, supplementary plantings to mimic local plant communities and landscapes will be used with local provenance species.
- d. Standing dead trees and forest litter (including logs and branches) to be retained for wildlife habitat unless deemed a risk to public safety.
- e. Monitor, maintain and enhance vegetation connectivity for wildlife habitat within the reserve and reserve networks.
- f. *Phytophthora cinnamomi* (a root rot pathogen) is listed as a key threatening process in NSW and has been identified as a threat to a number of species. Bushland workers are to use hygiene protocols to minimise risk.
- g. Report and record all reserve encroachments. Monitor for tree vandalism and/or removal within the reserve and report to Council Compliance for appropriate action.
- h. Continue to monitor wildlife habitat requirements and supplement where necessary.
- i. Monitor feral animal activity and implement appropriate management actions where necessary.
- j. Bushfire management will be achieved through implementation of a strategic hazard reduction program consistent with the Bushfire Risk Management Plan.
- k. Species diversity will be encouraged through an ecological burn program.
- l. Monitor and protect cultural and Aboriginal heritage sites within the reserve at all times. Bushland staff to notify Aboriginal Heritage Office prior to each burn to identify sites and implement protection measures and post-fire survey.
- m. This reserve has a valuable role as an educational resource. Preserve natural features used for educational purposes and continue to inform the community of bushland issues through on-site educational activities and signage. Maintain appropriate signage.
- n. Formal tracks to be regularly maintained and informal tracks to be closed to prevent damage to habitat and to impede access of feral animals, unless used for access by bushland management workers.
- o. Establish photo points to monitor the progress of reserve management actions.
- p. Reserve Action Plan progress to be reviewed annually and updated after five years.

Animal List for Artarmon Park

Artarmon Park provides habitat for a number native animals. A list of these species can be found at: https://www.willoughby.nsw.gov.au/files/sharedassets/public/ecn/willoughby-council-website/publications-reports-master-plans-strategies-action-plans/publications-reports-master-plans-strategies-action-plans/1-native_fauna_of_upper_flat_rock_creek_catchment.pdf

Native Plant List for Artarmon Park

FERNS	<i>Pultenaea retusa</i>	RUTACEAE
ASPENIACEAE	<i>Pultenaea stipularis</i>	<i>Correa reflexa</i>
<i>Asplenium australasicum</i>	GERANIACEAE	<i>Zieria pilosa</i>
<i>Asplenium flabellifolium</i>	<i>Geranium homeanum</i>	SAPINDACEAE
BLECHNACEAE	HALORAGACEAE	<i>Dodonaea triquetra</i>
<i>Blechnum cartilagineum</i>	<i>Gonocarpus micranthus</i>	PLANTAGINACEAE
<i>Blechnum nudum</i>	HYPERICACEAE	<i>Veronica plebeia</i>
<i>Doodia caudata</i>	<i>Hypericum gramineum</i>	SOLANACEAE
DENNSTAEDTIACEAE	LAMIACEAE	<i>Solanum aviculare</i>
<i>Hypolepis muelleri</i>	<i>Prostanthera ovalifolia</i>	VITACEAE
GLEICHENIACEAE	LOGANIACEAE	<i>Cissus hypoglauca</i>
<i>Gleichenia dicarpa</i>	<i>Logania albiflora</i>	MONOCOTS
LINDSAEACEAE	MALVACEAE	ASPARAGACEAE
<i>Lindsaea linearis</i>	<i>Brachychiton acerifolius</i>	<i>Lomandra brevis</i>
POLYPODIACEAE	MIMOSACEAE	<i>Lomandra cylindrica</i>
<i>Pyrrosia rupestris</i>	<i>Acacia decurrens</i>	<i>Lomandra filiformis</i> ssp. <i>coriacea</i>
PTERIDACEAE	<i>Acacia elata</i>	<i>Lomandra filiformis</i> ssp. <i>filiformis</i>
<i>Pteris tremula</i>	<i>Acacia falcata</i>	<i>Lomandra gracilis</i>
SCHIZAEACEAE	<i>Acacia floribunda</i>	CYPERACEAE
<i>Schizaea bifida</i>	<i>Acacia irrorata</i>	<i>Gahnia clarkii</i>
THELYPTERIDACEAE	<i>Acacia longifolia</i> var. <i>longifolia</i>	<i>Lepidosperma gunnii</i>
<i>Chrostola dentata</i>	<i>Acacia parramattensis</i>	<i>Schoenus apogon</i>
DICOTS	MYRTACEAE	<i>Schoenus melanostachys</i>
AMARANTHACEAE	<i>Acmena smithii</i> E	<i>Nerostylis capillaris</i>
<i>Alternanthera denticulata</i>	<i>Angophora costata</i>	JUNACEAE
APIACEAE	<i>Angophora floribunda</i>	<i>Juncus continuus</i>
<i>Xanthosia pilosa</i>	<i>Eucalyptus botryoides</i>	<i>Juncus planifolius</i>
<i>Xanthosia tridentata</i>	<i>Eucalyptus capitellata</i>	<i>Juncus usitatus</i>
ARALIACEAE	<i>Eucalyptus microcorys</i>	ORCHIDACEAE
<i>Polyscias murrayi</i>	<i>Eucalyptus paniculata</i> ssp. <i>paniculata</i>	<i>Cryptostylis</i> sp.
APOCYNACEAE	<i>Eucalyptus pilularis</i>	<i>Pterostylis longifolia</i>
<i>Marsdenia suaveolens</i>	<i>Eucalyptus pilularis</i> x <i>globoidea</i>	<i>Pterostylis nutans</i>
ASTERACEAE	<i>Eucalyptus resinifera</i> ssp. <i>resinifera</i>	ASPHODELACEAE
<i>Ozothamnus diosmifolium</i>	<i>Eucalyptus saligna</i>	<i>Dianella caerulea</i> var. <i>producta</i>
<i>Senecio hispidulus</i>	<i>Kunzea ambigua</i>	<i>Dianella revoluta</i> var. <i>revoluta</i>
CASUARINACEAE	<i>Melaleuca armillaris</i>	POACEAE
<i>Allocasuarina torulosa</i>	<i>Melaleuca ericifolia</i>	<i>Rytidosperma tenuius</i>
CAMPANULACEAE	<i>Melaleuca linariifolia</i>	<i>Dichelachne inaequiglumis</i>
<i>Lobelia anceps</i>	<i>Syncarpia glomulifera</i> ssp. <i>glomulifera</i>	<i>Imperata cylindrica</i>
<i>Lobelia purpurascens</i>	PHYLLANTHACEAE	<i>Opismenus aemulus</i>
CUNONIACEAE	<i>Poranthera microphylla</i>	<i>Panicum simile</i>
<i>Callicoma serratifolia</i>	PITTOPOACEAE	<i>Paspalum distans</i>
<i>Ceratopetalum apetalum</i>	<i>Pittosporum undulatum</i>	<i>Poa affinis</i>
DILLENIACEAE	PLANTAGINACEAE	COLCHICACEAE
<i>Hibbertia aspera</i>	<i>Veronica plebeia</i>	<i>Scheuchzeria undulata</i>
ERICACEAE	PROTEACEAE	ASPHODELACEAE
<i>Epacris purpurascens</i> var. <i>purpurascens</i>	<i>Banksia ericifolia</i>	<i>Xanthorrhoea arborea</i>
<i>Trochocarpa laurina</i>	<i>Banksia integrifolia</i>	<i>Xanthorrhoea media</i>
FABACEAE	<i>Banksia spinulosa</i>	
<i>Bossiaea heterophylla</i>	<i>Hakea salicifolia</i>	
<i>Indigofera australis</i>	<i>Hakea sericea</i>	
<i>Pultenaea daphnoides</i>	<i>Xylomelum pyrifolium</i>	

April 2022

All actions within this plan relate directly to the Willoughby City Council Urban Bushland Plan of Management Volume 1, 2014

Urban Bushland Plan of Management – Volume 1, 2014

2022 - 2027