

Embers, Epicorm: Art of the Eurobodalla

6 July – 24 July 2022

Incinerator Art Space

Seven Far South Coast female artists respond to the Black Summer Fires of 2019/2020

1.

Julie Mia Holmes

It's not easy being green, 2020

gouache, chinagraph and soldering iron on
plywood
80 x 60 cm



2.

Julie Mia Holmes

big bad banksia men, 2020

gouache, chinagraph and soldering iron on
plywood
80 x 60 cm



3.

Julie Mia Holmes

ashes to ashes, 2020

gouache, chinagraph and soldering iron on
plywood
80 x 60 cm



INCINERATOR
ART SPACE

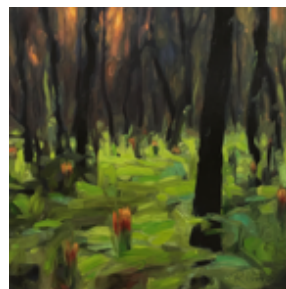
2 Small Street Willoughby NSW 2068

Wednesday to Sunday 10am-4pm

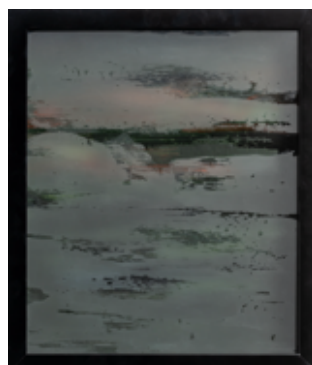
www.willoughby.nsw.gov.au/arts

Incinerator Art Space is a Willoughby City Council facility

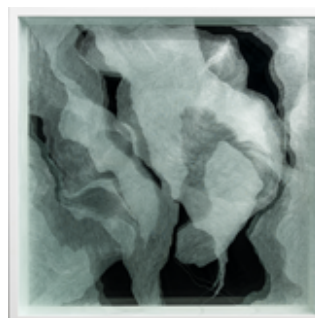
4.
Raewyn Lawrence
Luminous, 2020
oil on canvas
30 x 30 cm



5.
Amy Schleif
Seeing No. 42, 2022
reclaimed picture frame, acid washed glass &
oil paint
34 x 29.5 x 5 cm



6.
Amy Schleif
Seeing No. 43, 2022
hand engraved glass, mirror, handmade frame
105 x 105 x 9.5 cm



7.
Amy Schleif
Seeing No. 44, 2022
reclaimed window, hand engraved, reclaimed
bed linen & oil paint
89 x 149 x 3 cm



INCINERATOR
ART SPACE

2 Small Street Willoughby NSW 2068
Wednesday to Sunday 10am-4pm
www.willoughby.nsw.gov.au/arts
Incinerator Art Space is a Willoughby City Council facility

8.

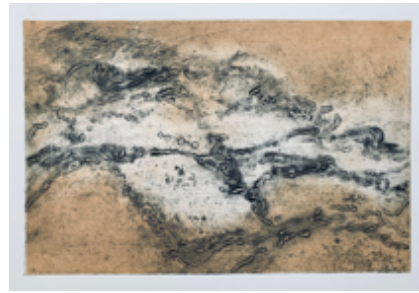
Mirabel FitzGerald

Aftermath – Guerella Bay, 2022

intaglio collograph print and aquatint on BFK
paper, artist proof, plantation ash frame

55 x 71 cm

(and 3 available unframed)



9.

Mirabel FitzGerald

Embers, 2021

two plate colour etching and aquatint on
Hahnemuhle paper, artist proof, plantation ash
frame

55 x 71 cm

(and 1 available unframed)



10.

Mirabel FitzGerald

Mountains of Ash – Tidal 2, 2022

ink and watercolour drawing on Hahnemuhle
paper, plantation ash frame

55 x 71 cm

(and 1 available unframed)



11.

Jo Victoria

hope in the bones, 2022

porcelain, wire

various dimensions



12.

Jo Victoria

ghost cocoon #3, 2019

porcelain

14 x 23 x 23 cm



INCINERATOR
ART SPACE

2 Small Street Willoughby NSW 2068

Wednesday to Sunday 10am-4pm

www.willoughby.nsw.gov.au/arts

Incinerator Art Space is a Willoughby City Council facility

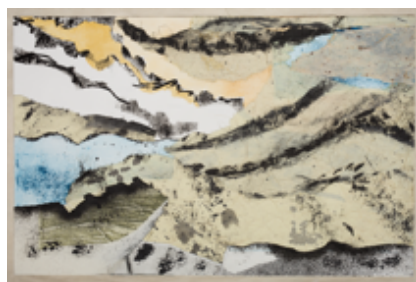
13.
Jo Victoria
ghost cocoon #5 2019
porcelain
18 x 25 x 25 cm



14.
Jo Victoria
ghost cocoon #7, 2019
porcelain
30 x 60 x 60 cm



15.
Mirabel FitzGerald
Ashes upon Ashes, 2021
ink drawing, watercolour collage on
Hahnemuhle paper, plantation ash frame
55 x 71 cm



16.
Mirabel FitzGerald
A Terrible Beauty, 2022
three plate colour etching and aquatint on
Hahnemuhle paper, edition of 6, plantation ash
frame
40 x 38 cm
(and 5 available unframed)



17.
Mirabel FitzGerald
After Rain, 2022
two plate colour etching and aquatint on
Hahnemuhle paper, edition of 6, plantation ash
frame
40 x 36 cm
(and 5 available unframed)



INCINERATOR
ART SPACE

2 Small Street Willoughby NSW 2068
Wednesday to Sunday 10am-4pm
www.willoughby.nsw.gov.au/arts
Incinerator Art Space is a Willoughby City Council facility

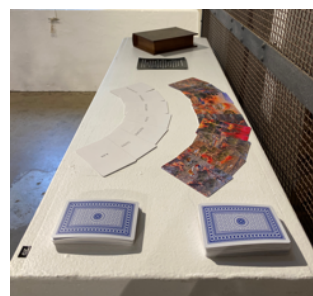
18.
Mirabel FitzGerald
***Beyond Black Summer*, 2022**
two plate colour etching and aquatint on
Hahnemuhle paper, edition of 6, plantation ash
frame
40 x 36 cm
(and 5 available unframed)



19.
Mirabel FitzGerald
***Mountains of Ash – Tidal*, 2021**
ink drawing and collage on Japanese paper,
plantation ash frame
64 x 77 cm



20.
Jennifer Hawkins
***Playing with Fire*, 2022**
52 playing cards, images and texts, recycled
cards, book and box
9 x 6 x 7 cm



21.
Jennifer Hawkins
***Once Were Trees*, 2019**
perspex trunk and branches. 90 acetate painted
leaves. 4 trees
160 x 40 x 40 cm



22.
Jo Victoria
***ghost cocoon #6*, 2019**
porcelain
24 x 30 x 30 cm



INCINERATOR
ART SPACE

2 Small Street Willoughby NSW 2068
Wednesday to Sunday 10am-4pm
www.willoughby.nsw.gov.au/arts
Incinerator Art Space is a Willoughby City Council facility

23.
Jo Victoria
ghost cocoon #1, 2019
porcelain
14 x 23 x 23 cm



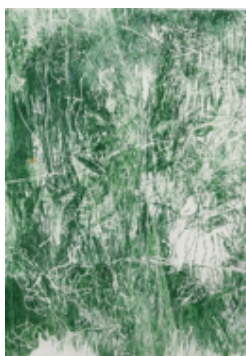
24.
Jo Victoria
ghost cocoon #2, 2019
porcelain
33 x 23 x 23 cm



25.
Jo Victoria
ghost cocoon #4, 2019
porcelain
18 x 6 x 6 cm



26.
Julie Mia Holmes
verdant 1, 2022
Woodblock on japanese paper
86 x 65 cm



INCINERATOR
ART SPACE

2 Small Street Willoughby NSW 2068
Wednesday to Sunday 10am-4pm
www.willoughby.nsw.gov.au/arts
Incinerator Art Space is a Willoughby City Council facility

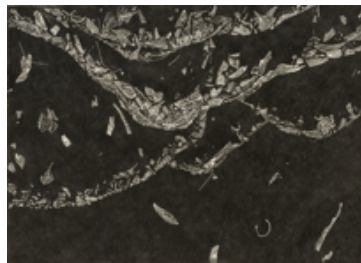
27.

Julie Mia Holmes

burnt offerings, 2020

linocut on Kozo Igusa paper, artist proof

63 x 93 cm



28.

Walbunja/Ngarigo Cheryl Davison-Overtton

Unsanctified, 2022

hand burnt timber, Tasmanian oak and ply

200 x 120 x 120 cm



29.

Julie Mia Holmes

wild abandon, 2022

coloured pencil on japanese papers

104 x 78 cm



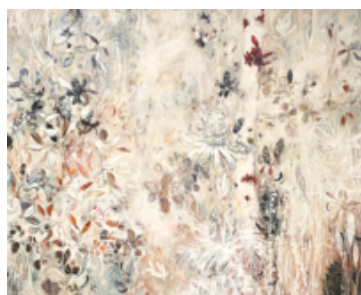
30.

Raewyn Lawrence

Recovery with Ghosts, 2022

oil on canvas

120 x 150 cm



INCINERATOR
ART SPACE

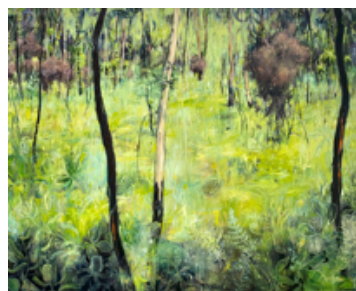
2 Small Street Willoughby NSW 2068

Wednesday to Sunday 10am-4pm

www.willoughby.nsw.gov.au/arts

Incinerator Art Space is a Willoughby City Council facility

31.
Raewyn Lawrence
Recovery in Green, 2020
oil on canvas
120 x 150 cm



32.
Raewyn Lawrence
Burrawangs Return 2, 2020
oil on canvas
68 x 78 cm



33.
Raewyn Lawrence
Banksia, 2022
oil on canvas
53 x 45 cm



34.
Jennifer Hawkins
Fire Tiles, 2020
collage and mixed media on craftboard, 120
tiles of 100mm sq.
90 x 120 cm



Please contact Nicole Wallace for all purchasing queries. Call 0408005305 or email nicolewallacecuratorial@gmail.com

Willoughby City Council is gratefully acknowledged for the provision of Incinerator Art Space.

INCINERATOR
ART SPACE

2 Small Street Willoughby NSW 2068
Wednesday to Sunday 10am-4pm
www.willoughby.nsw.gov.au/arts
Incinerator Art Space is a Willoughby City Council facility

INCINERATOR ART SPACE

2 Small Street Willoughby NSW 2068

Wednesday to Sunday 10am-4pm

www.willoughby.nsw.gov.au/arts

Incinerator Art Space is a Willoughby City Council facility