

The Ripple Effect

Geoffrey Adams

16 to 27 June 2021

Art Space on The Concourse

My mangrove works have multiple layers of pigment, run across the canvas in different directions. I often paint the canvases flat on the ground, drip pigment from different heights, then lift and turn the works as the paint forms random patterns and colour combinations. This experimental process can be quite random, but often produces unexpected and highly distinctive works that are almost impossible to replicate.

1.

Feeding Time, 2020

Oil on canvas,

102x 152 cm

\$3500



2.

Snow White And The Wren, 2020

Oil on canvas

76 x 102 cm

\$1700



3.

The Blue Heron, 2021

Oil on canvas

91 x 102 cm

\$2750



4.

Noir Nomads, 2020

Oil on canvas

102 x 102 cm

\$2400



5.

***Mangrove Mosaic*, 2021**

Oil on canvas

91 x 91 cm

\$2100



6.

***Heronx4*, 2021**

Oil on canvas

76 x 76 cm

\$1500



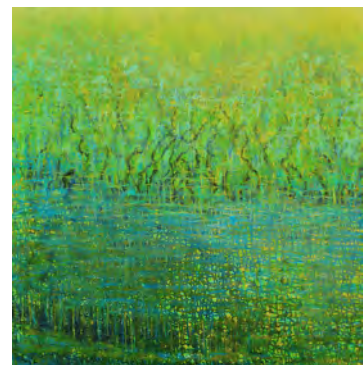
7.

***Big Fish*, 2021**

Oil on canvas

91 x 91 cm

\$2100



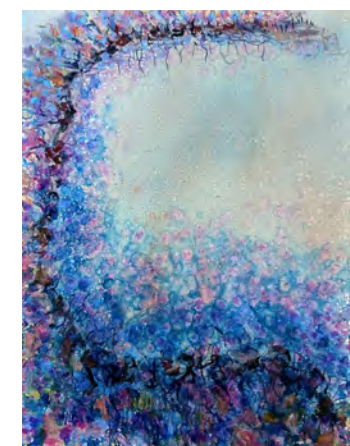
8.

***Untouched*, 2020**

Oil on canvas

102 x 76 cm

\$1700



9.



***Moondance*, 2021**
Oil on canvas
76 x 51 cm
\$1000



10.
***Mangrove Galaxy*, 2020**
Oil on canvas
76 x 102 cm
\$1700



11.
***Little Women*, 2020**
Oil on canvas
102 x 76 cm
\$1700



12.
***Nest*, 2020**
Oil on canvas
102 x 76 cm
\$1700



13.

Camouflage, 2020

Oil on canvas

102 x 76 cm

\$1700



14.

Summertime, 2021

Oil on canvas

92 x 46 cm

\$1200



15.

Blossom, 2021

Oil on canvas

92 x 46 cm

\$1200



16.

***Dark Forest*, 2021**

Oil on canvas

91 x 91 cm

\$2100



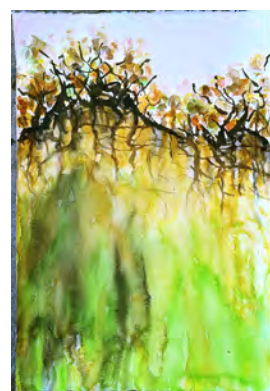
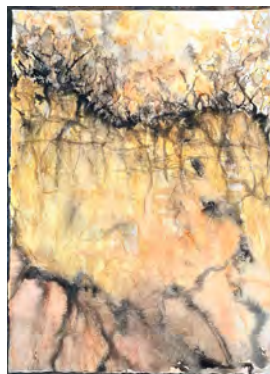
17-25.

Unframed works on paper, 2021

Watercolour, ink and gouache on paper

62 x 40 cm

\$200 each





26-33.
Unframed works on paper
Watercolour and ink
14 x 19 cm
\$75 each



Willoughby City Council is gratefully acknowledged for the provision of Art Space on The Concourse.

