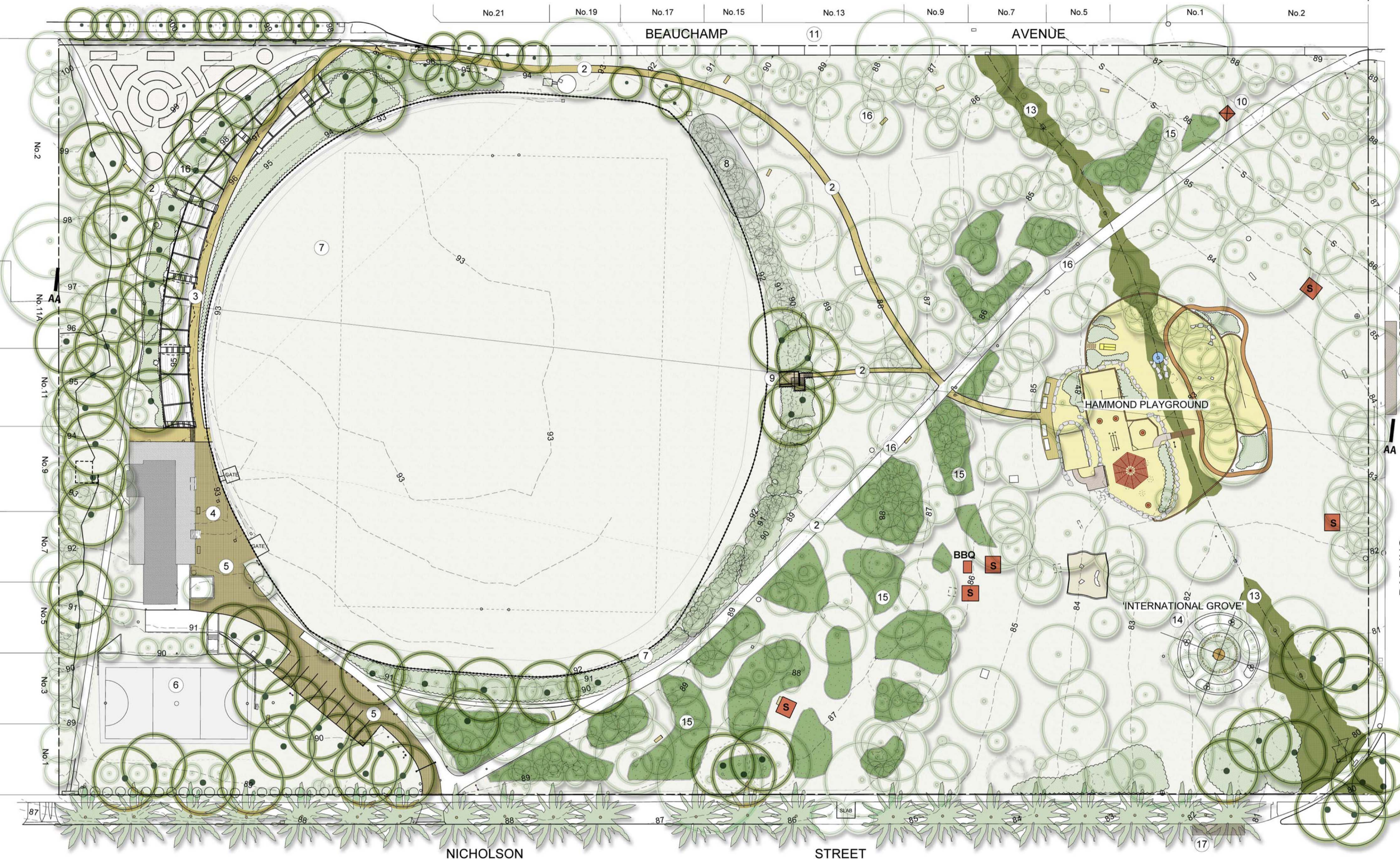


- 1. ROSE GARDEN**  
Retain the existing rose garden in its current form. Replace sections of grass between beds with dwarf buffalo, and install steel edges to beds in order to reduce mowing and long-term maintenance.
- 2. PATHS**  
Construct new paths linking the playground with Rose Street/ Beauchamp Avenue and the proposed oval/ viewing platform. Repair the existing diagonal path and the path behind the proposed spectator seating.
- 3. SPECTATOR SEATING**  
Demolish existing spectator seating and paths north of the pavilion. Construct a new path for universal access (1 in 20 grade) between the pavilion and Rose Street. Construct new stepped spectator seating for approx. 420 people with possible shade structures (see Dwg. #2 for details). Plant out the existing embankment with local trees, low shrubs and ground covers to reduce maintenance and increase sense of enclosure of oval. Replace the existing Cotoneaster hedge with a Dwarf Lilly Pilly hedge and shade trees.
- 4. PAVILION**  
Subject to consultation with all pavilion users, renovate the existing pavilion to provide an enlarged hall, new verandah, kiosk/ kitchen, steps, storage space and better disabled access. Include solar panels for energy supply; energy and water efficient fittings and install rainwater tanks on lower level for toilet flushing (see Dwg. #2 for details).
- 5. SHARED VEHICULAR/ PEDESTRIAN ACCESS AND CARPARK**  
Resurface the existing bitumen to the access road and the area between the pavilion and oval to denote a shared pedestrian/ vehicular zone. Reduce the existing carpark to 10 car spaces to provide more grass in front of the pavilion and to reduce the impact of cars.
- 6. BASKETBALL COURT**  
Discourage unauthorized use of the court at night by locking the gate and turning off the floodlights. Plant new local trees to provide shade for the carpark and the basketball court. Demolish the existing steps in the SW corner of the park and provide universal access. Implement soundproofing to basketball backboard.
- 7. SPORTSFIELD**  
Install demountable practice soccer net on the oval fence and a remote controlled scoreboard. Retain current off-leash dog policy for the sportsfield. Provide one more poo bin with bags at the northern entrance to the oval. Install a notice board near the pavilion to advise residents about bookings on the oval and other events in the park. Repair any boggy patches on the oval. Build up the SE corner of oval including raising the existing retaining wall and reinstate the fence to improve field conditions.
- 8. WATER HARVESTING**  
Possible location for future storage tanks for stormwater. Separate investigation required to assess water catchment potential for water capture and re-use.



- 9. ACCESS STAIRS**  
Construct new stairs on the eastern side of the oval to improve access and make a stronger connection between the upper and lower sections of the park. Replace existing Casuarinas on either side of the structure with local trees and low shrubs/ ground covers to allow clear views to and from the viewing platform. Underplant existing trees on embankment to oval with shrubs and groundcovers to reduce maintenance.
- 10. UNISEX TOILET**  
Proposed new unisex toilet near existing sewer line to service playground and lower section of the park, subject to a future Development Application.
- 11. BEAUCHAMP AVENUE**  
Consultation with residents required to discuss landscape options for the streetscape of Beauchamp Avenue.
- 12. HAMMOND PLAYGROUND**  
Upgrade the playground for a wider range of ages by removing the existing plastic slide and relocation of the spinners. Install a new sitting area overlooking the playground, a new slide on a mound, climbing frame, hand pump and water play area, stepping stones and hardwood timber bridge over the creek, trike track, flying fox and the tree house. Expand organic softfall area around climbing frame by extending the sandstone boulder edge. Provide new organic softfall area under the proposed flying fox.
- 13. SCOTTS CREEK**  
Define the existing waterway through the playground and lower part of the park with new wetland planting. Plant out the corner of Darling and Nicholson Streets with local trees, low shrubs, grasses and ground covers to provide enclosure but not obstruct views into the park.
- 14. INTERNATIONAL GROVE**  
Relocate the existing concrete spheres into the garden beds with a North/ South/ East/ West orientation. Relocate the existing tap into a garden bed and provide a sandstone dog bowl. Replace the existing wind vane in the centre of the circle with a sandstone sculpture, or similar centerpiece.
- 15. PLANTING BEDS**  
Reinforce remnant trees with new planting of local tree species as older trees decline in health. Infill among the existing understorey plants in the beds with flowering, drought-resistance plants with the same character as existing Camellias and Azaleas. Plant the existing bank below the oval with shrubs and ground covers to reduce grass cutting and long-term maintenance.
- 16. LIGHTING**  
Underground existing power lines and upgrade lighting through the park. Engage the services of an ornithologist to ensure that any new lighting is compatible with bird habitat.
- 17. NICHOLSON AND DARLING STREETS PARKING**  
Set time limit of 2 hours parking in a 4 car bay in Nicholson street adjacent to the International Grove and extend the 2 hour limit parking in Darling street to provide more on-street parking for park users during the week (8 cars).

**LEGEND**

CONTOUR @ 1m INTERVAL	EXISTING TREE IN POOR CONDITION OR WEED SPECIES	PROPOSED WETLAND PLANTING	PROPOSED SPECTATOR SEATING	EXISTING PATH/ PAVING
EXISTING TREE RETAINED	PROPOSED NEW TREES OF LOCAL SPECIES	PROPOSED FLOWERING DROUGHT RESISTANT PLANTS	EXISTING & NEW ROCK EDGE	PROPOSED NEW PATH
EXISTING PALM RETAINED	PROPOSED UNDERSTORY PLANTING	GRASS	NEW SHELTER/ PICNIC TABLE	EXISTING SEWER LINE

# Beauchamp Park, Chatswood

Landscape Masterplan 1:500 @ A1

sheet 1 of 2

september 2008

