



**LEGEND:**

- Vehicular access
- Ped / cycle access
- Pedestrian access
- Playground area
- Building
- Playing field
- Car parking
- Active recreation
- BBQ / picnic areas
- Community garden
- Water sustainability
- Passive recreation area
- Floodlight
- Bicycle parking

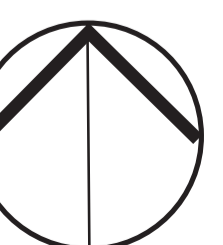
**ARTARMON RESERVE MANAGEMENT OBJECTIVES:**  
(from Naremburn Ward Parks - Plan of Management 1996)

- To provide a sportsfield and specialised outdoor recreational facilities in a bush park setting.
- To be a district park for the people of Artarmon and Naremburn, where the community may enjoy a range of outdoor activities.
- To protect and extend the surrounding bushland and to control stormwater.

This Master Plan is to be read in conjunction with the Artarmon Reserve Action Plan which incorporates the bushland areas.

**ACTIONS:**

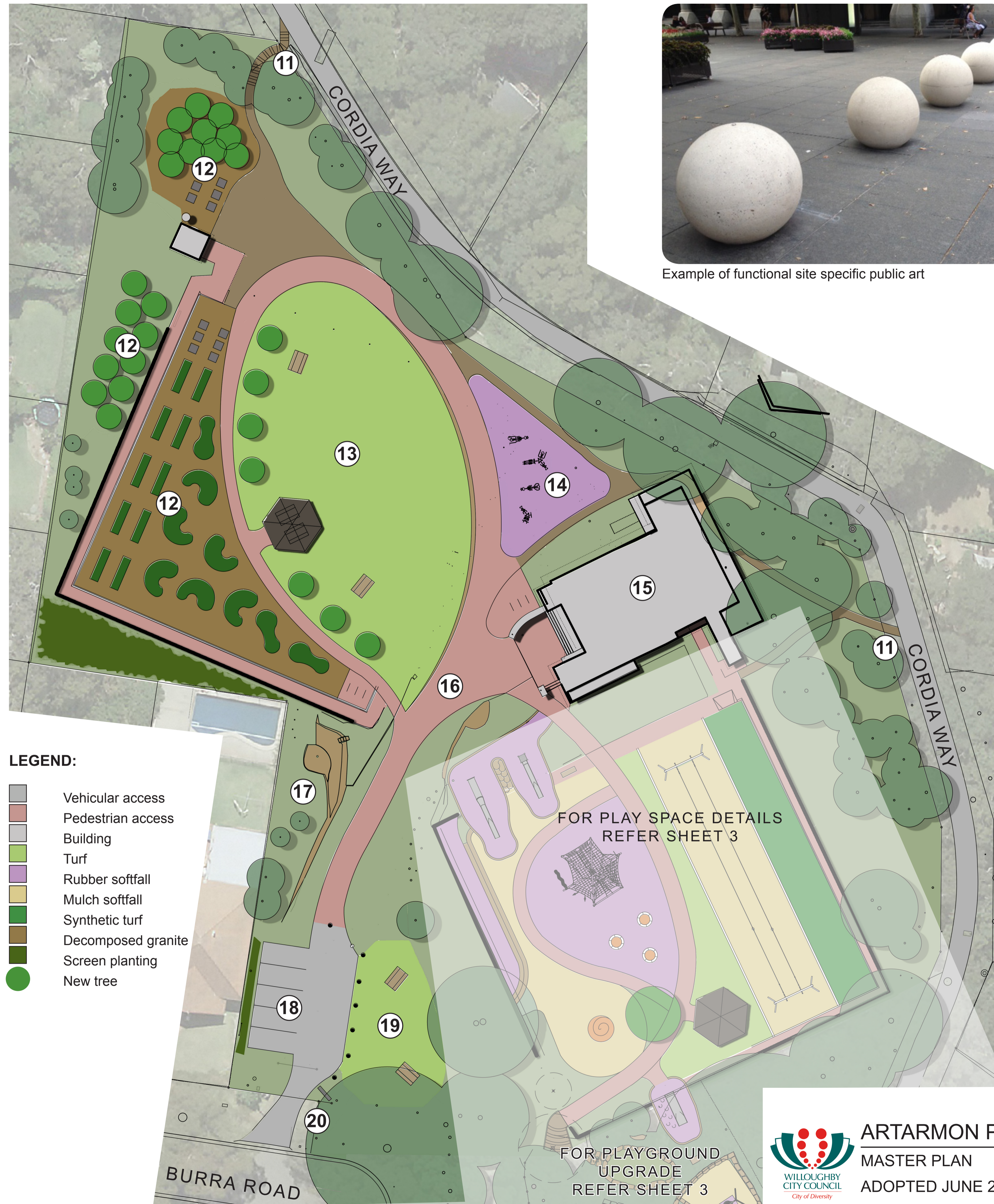
- 1 Oval / Sportsground**
  - Improve sportsground drainage and irrigation and level playing surface (as per Sports Asset Management Plan).
  - Improve drainage to perimeter areas
- 2 Park buildings**
  - Improvement options for the Norm Brooks Pavilion subject to separate investigation and report.
- 3 Playground**
  - Upgrade playground as per playground Asset Management Plan. Lower playground to cater to younger children and include swings, slides, climbing structure, sandpit, musical elements and picnic shelter.
- 4 Park facilities**
  - Relocate western BBQ area to southern side of upper car park. Reconfigure to accommodate.
  - Relocate and upgrade bubbler near oval for improved accessibility.
  - Install a drinking bowl for dogs that is able to be emptied and refilled.
  - Provide additional dog poo bin.
  - Upgrade seating and furniture as required.
  - Install a new signage and wayfinding system.
- 5 Access**
  - a) Improve entry drive visibility by widening parts of the roadway without impacting existing trees. Raise powerlines over entry drive.
  - b) Install a pedestrian path between the upper and lower car parks. Install a safety barrier either side of road between upper and lower car park.
  - c) Upgrade pedestrian bridge over creek (as per Bridges Asset Management Plan).
- 6 Traffic & parking**
  - a) Reconfigure upper car park to accommodate relocated BBQ area. Delineate spaces with line marking. Resurface asphalt. Improve lighting to upper car park.
  - b) In lower car park define spaces and traffic flow with line marking and directional signage. Reconfigure car park so that car spaces, wheelstops and aisle widths meet Australian standards. Include 1 accessible parking bay.
- 7 Half basketball court**
  - Replace basketball hoop and backboard. Install ball fence between court and car park, and court and planter bed.
- 8 Cricket nets**
  - Retain and renew cricket nets as per Sports Asset Management Plan.
- 9 Water sustainability**
  - Future opportunity for use of stormwater harvesting infrastructure to irrigate the oval.
  - Install a raingarden in the lower car park between the car park and oval fence.



## Northern Artarmon Parklands

- The Northern Artarmon Parklands site includes;
- Decorative and functional site specific public art informed by the site's bowling club history.
  - Enhanced pedestrian connections to Cordia Way and the existing playground in the adjoining reserve
  - New signage and pathways through the site
  - Weed eradication and additional planting works
  - Use access and mobility standards to determine choice and location of furniture and signage.

- 11 Access**  
Create two new pedestrian entry points to the Artarmon Parklands site from Cordia Way.
- 12 Community garden**  
Provide space for new community garden on upper bowling green. Include raised planter beds, compost bins, fruit trees, and water storage. Refurbish existing shed for storage of garden tools and equipment and extend the roof to enable water collection.
- 13 Passive recreation area**  
Open lawn area, picnic settings, gazebo, BBQ facilities. Space for markets or outdoor cinema.
- 14 Outdoor fitness equipment**  
Provide outdoor fitness equipment (as per Open Space and Recreation Plan 2013).
- 15 Building**  
Former Artarmon Bowling Club house subject to a separate investigation and report.
- 16 Vehicular access**  
Roadway narrowed and retractable bollard installed at end of car park. Roadway for pedestrian use with occasional car access.
- 17 Flag pole**  
Refurbish existing flag pole and surrounding sandstone flagging and planting.
- 18 Parking area**  
Car park with 5 spaces including one accessible parking bay. Provision of bicycle parking. Screen planting between parking bays and neighbouring residential property.
- 19 Picnic area**  
Picnic area with picnic tables and lawn. Bollards to define area from car park.
- 20 Entry**  
Remove existing walls. New entry signage. Realign driveway to meet new car park.



Example of functional site specific public art



12. Raised planter beds in community garden



13. Gazebo with picnic tables and BBQ



14. Exercise equipment



ARTARMON PARKLANDS, ARTARMON

MASTER PLAN

ADOPTED JUNE 2018

SHEET 2 OF 4

SCALE - 1:250 @ A1





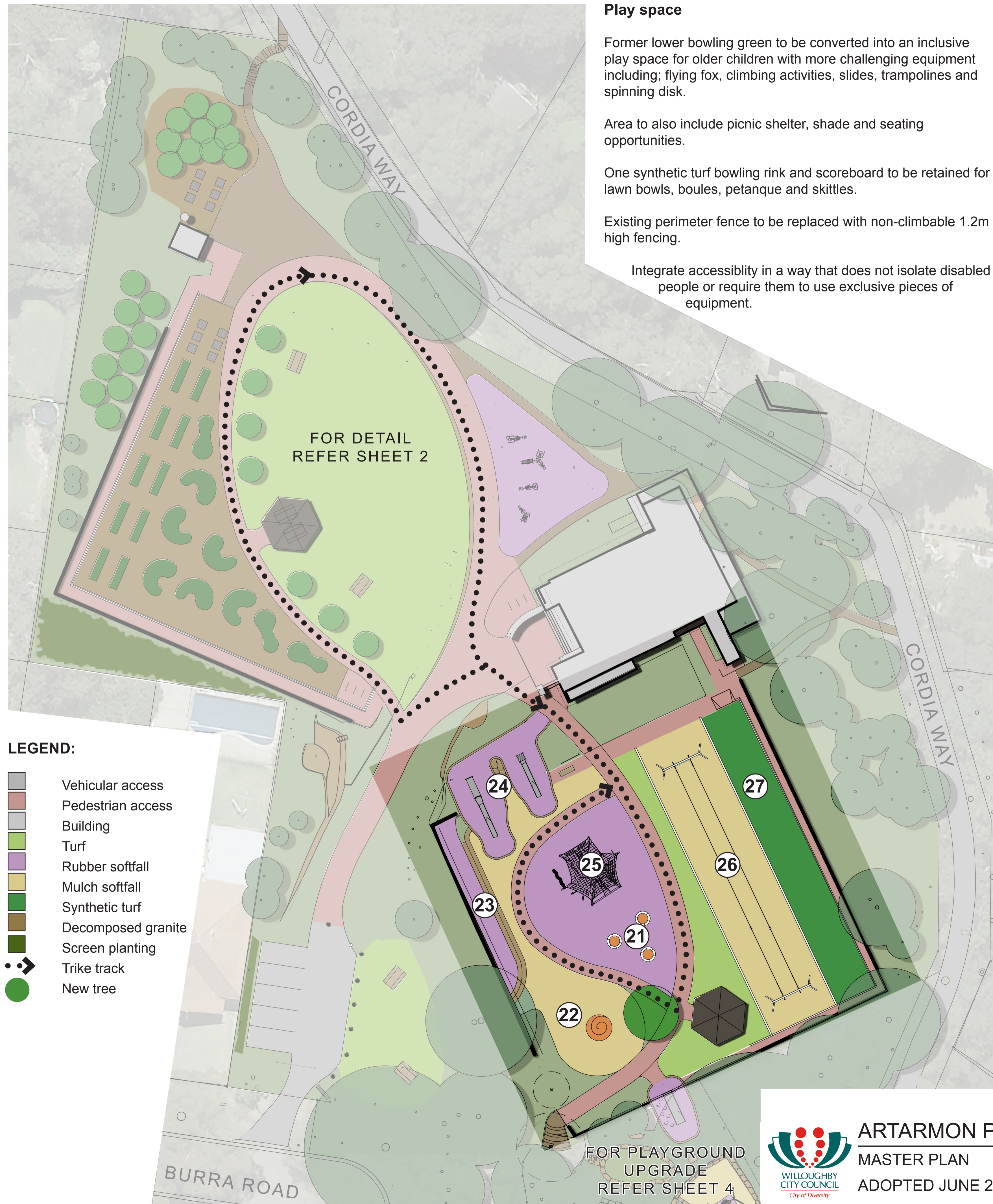
21. Inground trampoline



22. Spinning disk



23. Bouldering wall



**Play space**

Former lower bowling green to be converted into an inclusive play space for older children with more challenging equipment including; flying fox, climbing activities, slides, trampolines and spinning disk.

Area to also include picnic shelter, shade and seating opportunities.

One synthetic turf bowling rink and scoreboard to be retained for lawn bowls, boules, petanque and skittles.

Existing perimeter fence to be replaced with non-climbable 1.2m high fencing.

Integrate accessibility in a way that does not isolate disabled people or require them to use exclusive pieces of equipment.



24. Slides



25. Climbing structure



26. Double flying fox



27. Synthetic turf bowling rink



















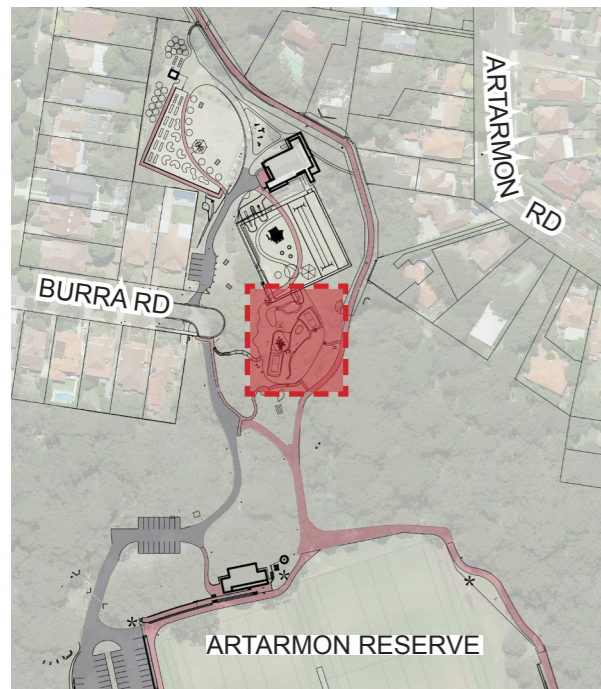
Artarmon playground is a district sized playground due for renewal as part of Council's Playgrounds Asset Management Plan. The intent is to address issues raised during community consultation.

The aim is to provide play opportunities for younger children, with more challenging equipment for older children provided on the former Artarmon Bowling Club site.

The existing trees, levels and fence are to be retained. Existing stone edging will be kept or reused where possible, and timber edging replaced with sandstone.

**LEGEND:**

- |  |                       |
|--|-----------------------|
| <b>Existing</b>  |                       |
|    | Tree to be retained   |
|    | Extent of tree canopy |
|   | Name sign retained    |
|   | Fence to be retained  |
| <b>Proposed</b>  |                       |
|    | Tree to be removed    |
|    | Softfall mulch        |
|    | Rubber softfall       |
|    | Sand                  |
|    | Crushed sandstone     |
|  | Concrete              |
|  | Sandstone edging      |
|   | Gate                  |
|   | Bubbler               |
|   | Timber leaf seat      |
|   | Bin                   |
|   | Bench seat with back  |



**PROPOSED PLAY EQUIPMENT**

- 
- A** Fort structure and slide
- 
- B** Basket swing
- 
- C** Double swings with infant seat
- 
- D** See-saw
- E** Sensory item
- F** Water pump
- G** Embankment slide

