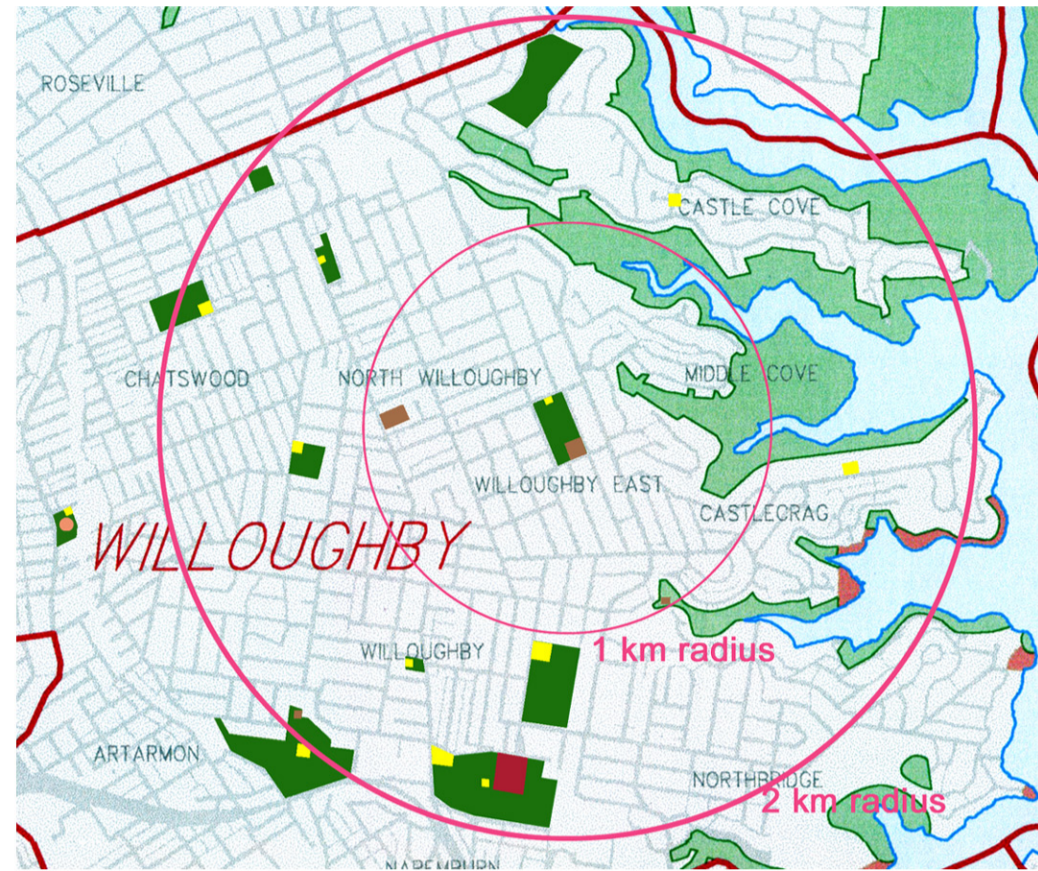




land use

- the park is surrounded by Zone 2 (a) (Residential "A" Zone)
- the park itself is Zone 6 (a) (Open Space "A" (Existing Recreation) Zone)



strengths

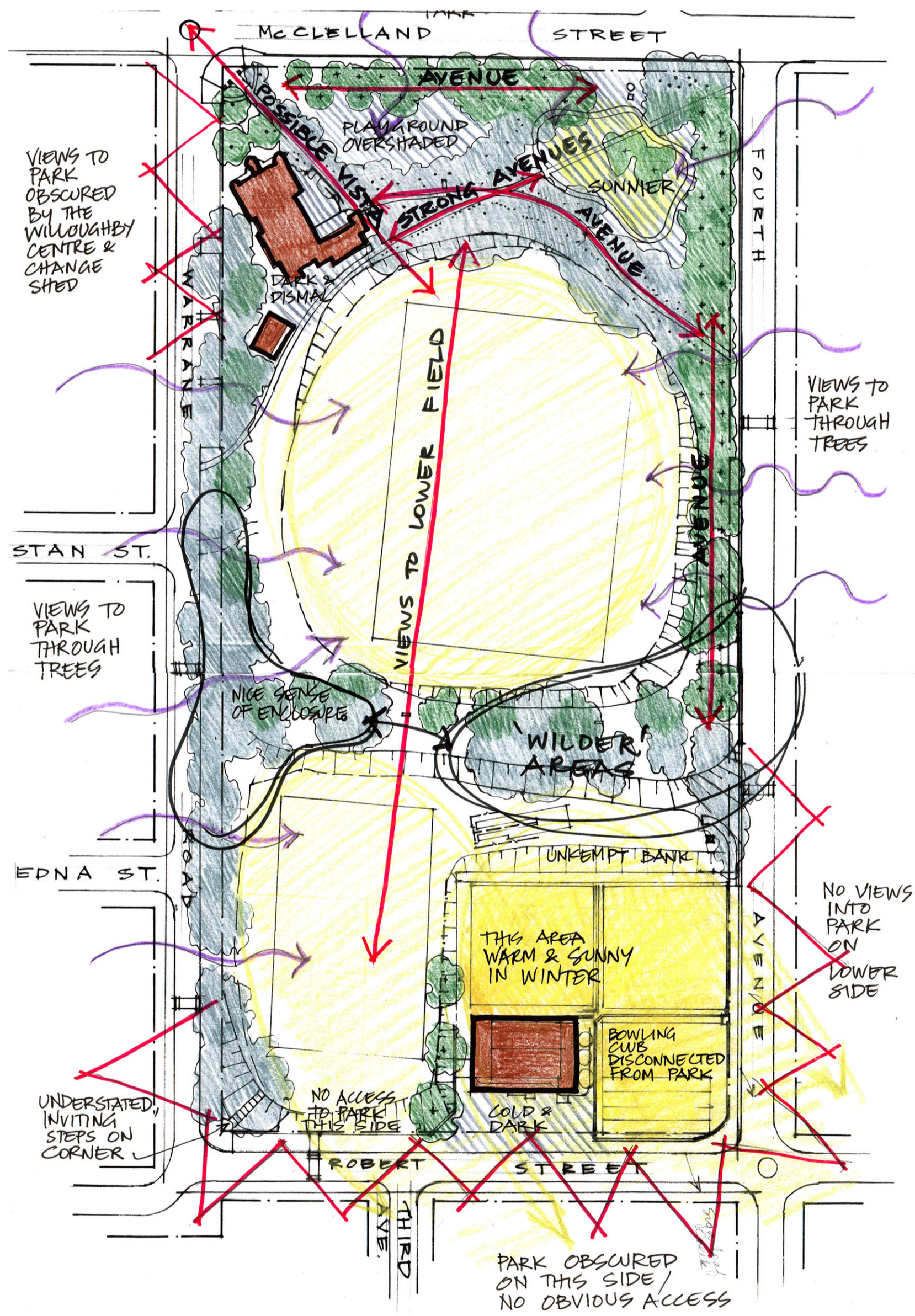
- mature avenues of trees, particularly Spotted Gums (*Eucalyptus maculata*)
- entrance gates
- heritage buildings
- well defined spaces
- good shade in summer

weaknesses

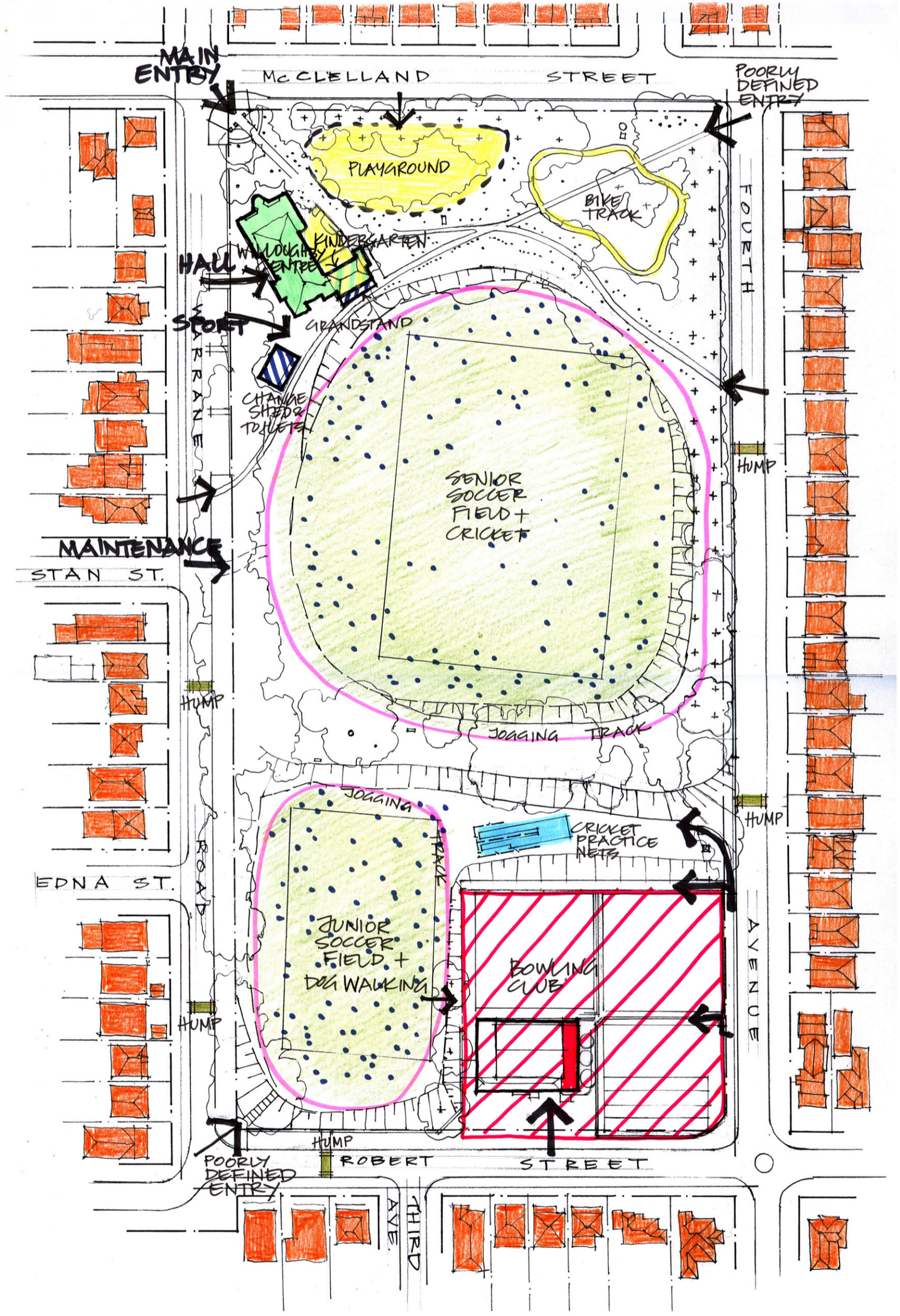
- general lack of coherency
- entries are poorly defined, and main entry gates not utilised
- dust, erosion, lack of groundcover plants
- stormwater runoff not utilised
- too much shade on playgrounds and upper field in winter
- buildings unattractive from the interior of the park, and building exteriors are neglected
- Bowling Club disconnected from the park and Willoughby Centre

open space proximity

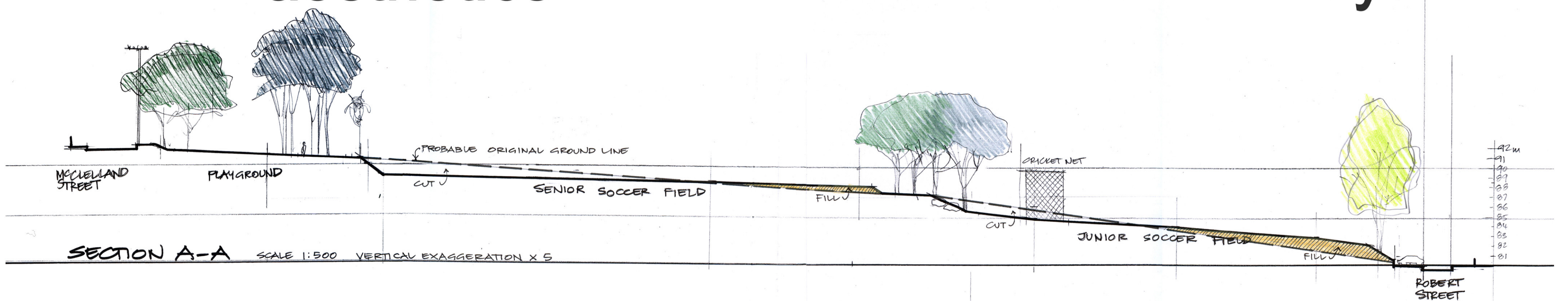
- Bushland
- Park
- Playground
- Recreation Centre
- Bowling Club



aesthetics



community



Willoughby Park

Site Analysis 2



BioDesign

BioDesign & Associates Pty. Ltd.
PO Box 1685 Rozelle NSW 2039
phone 02 9810 5500 mobile 02 9810 5599 email sue.hobley@biodesign.com.au