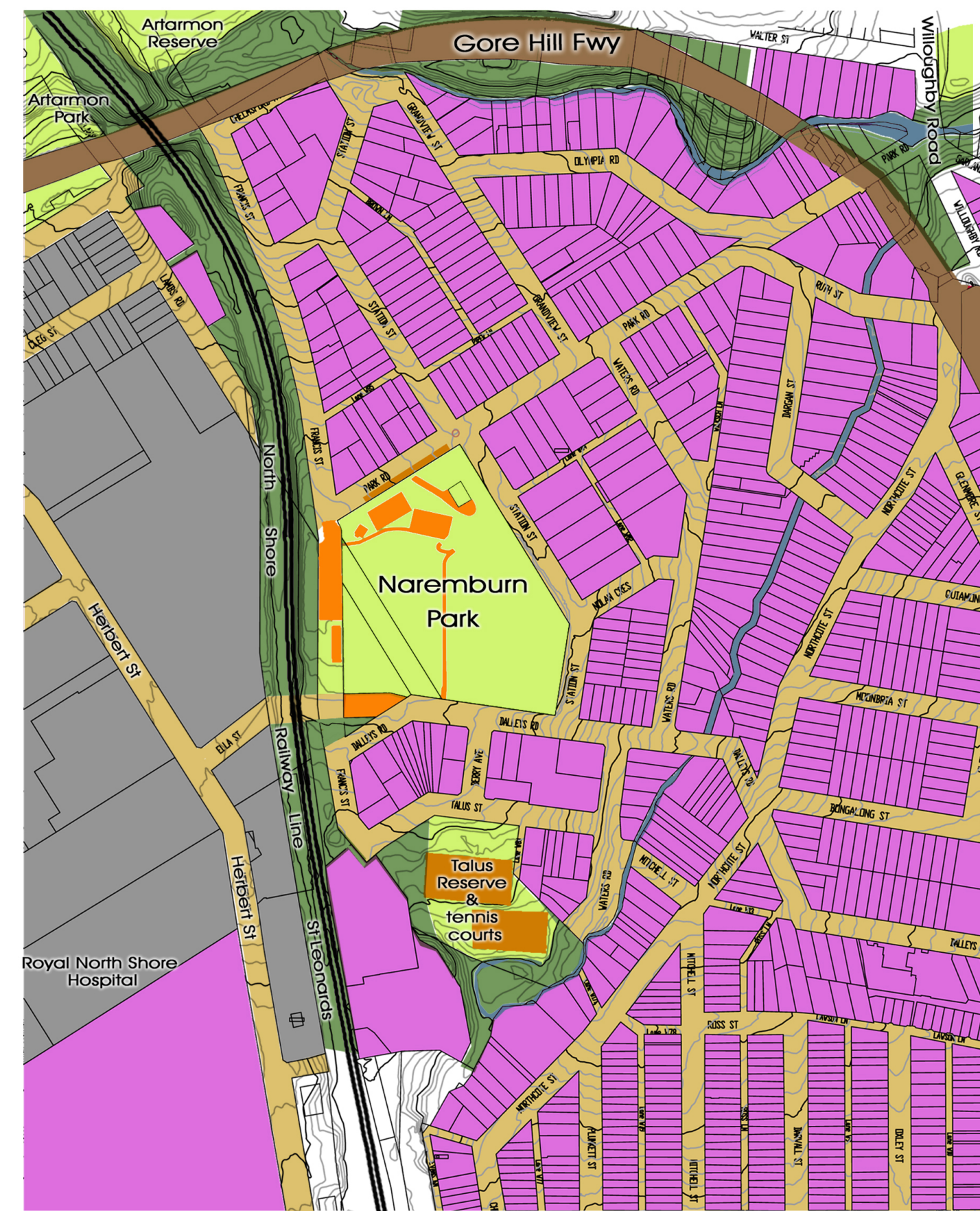




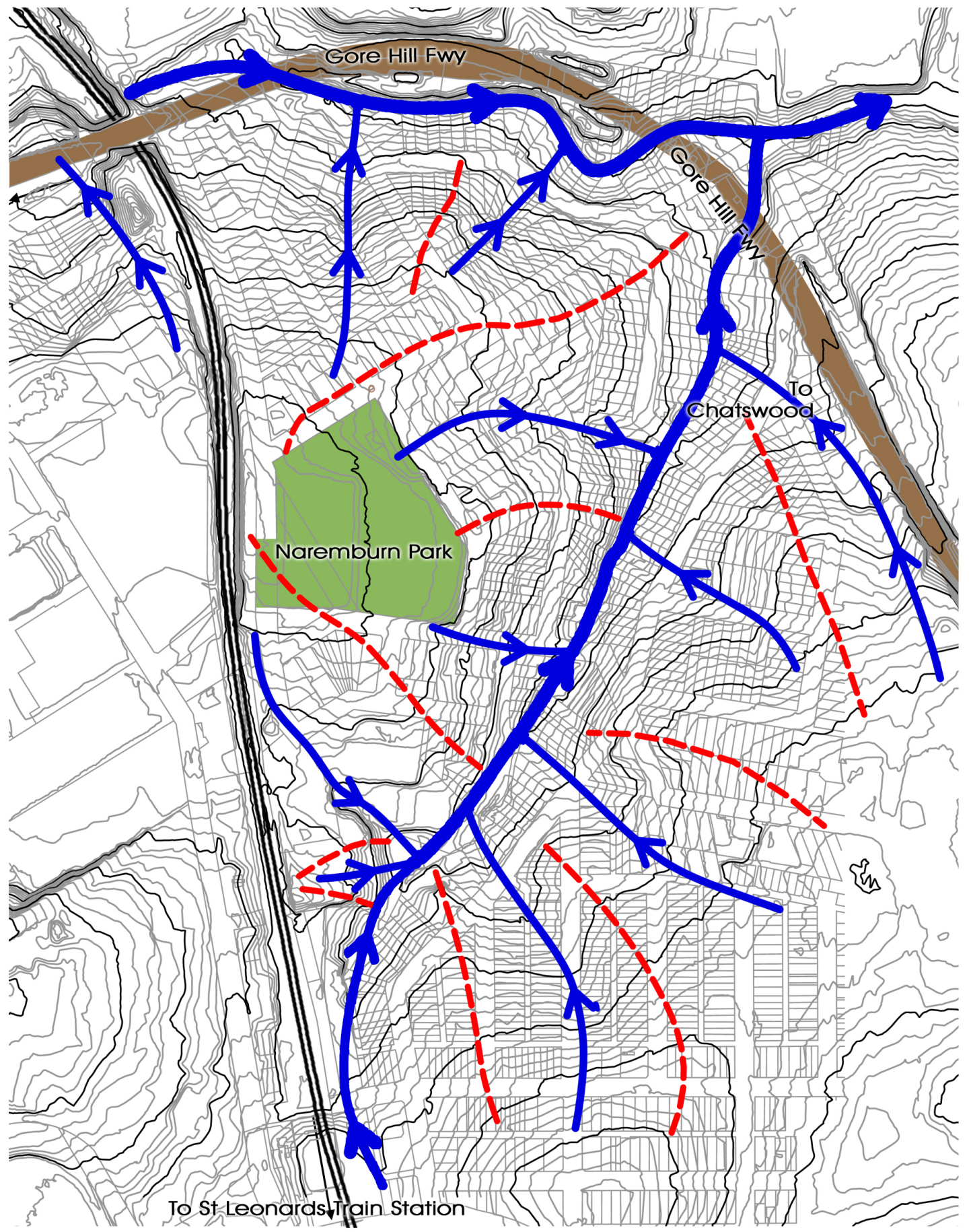
- Legend**
- Approximate original contours
 - Existing contours
 - Approximate fill zone
 - Overland flow
 - Drainage problems
 - Soil erosion
 - Degraded remnant vegetation
 - Mixed native and exotic planting
 - Native planting around park perimeter
 - Bush walk link to St Leonards Station
 - Recent dumped fill. Trees show signs of stress
 - Sewer main
 - Stormwater (underground) flow



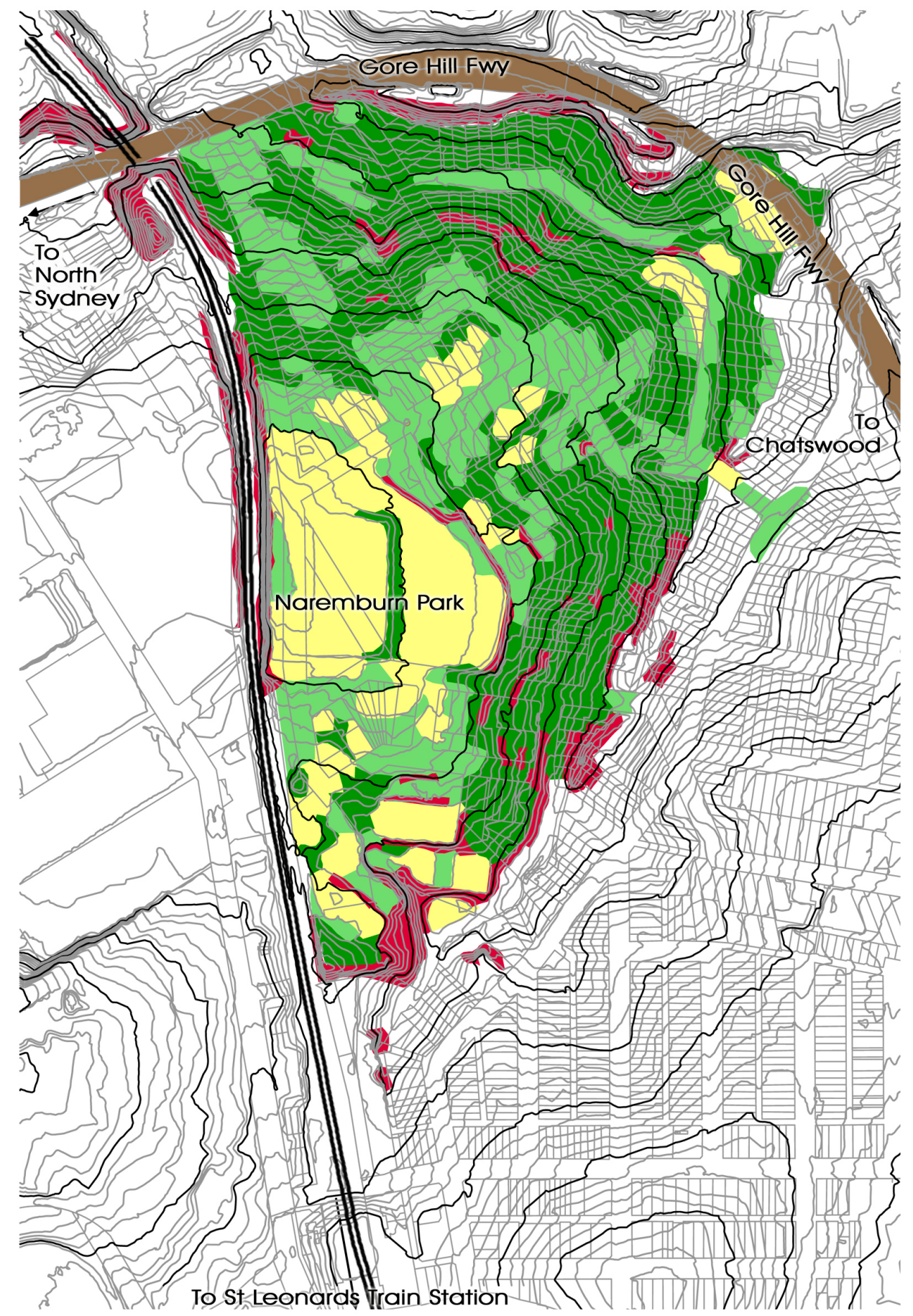
- Legend**
- Residential area
 - Road- concrete paving
 - Light industrial area
 - Major pavement within park area
 - Park
 - Ecological links
 - Water course

analysis

surface analysis



- Legend**
- Drainage line
 - Ridge line



- Legend**
- <1:5
 - 1:5-1:10
 - 1:10-1:20
 - >1:20

drainage

slope analysis

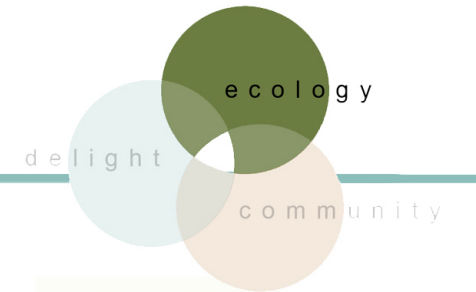


- Legend**
- Railway line
 - Major highway
 - Sports grounds & parks
 - Barrier to corridor
 - Railway corridor with remnant indigenous plants
 - Council "bushland" fabrication
 - Remnant vegetation
 - Water course

links-vegetation

Naremburn Park

Site Analysis - Ecology 2



Client: Willoughby Council
Sheet: 2/6 January 2008



75 Mullens St, Balmain NSW 2041 p: (02) 9810 5500 f: (02) 9810 5599 admin@biodesign.com.au www.biodesign.com.au