

# Coastal Exposure

Bruce Daniel

2 – 13 June 2021

## Art Space on The Concourse

All works are GST-free.



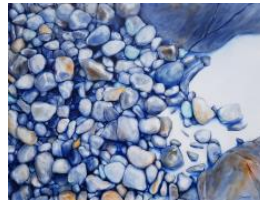
1.  
**Woopi sunset**, 2021  
Oil on canvas  
76 x 101 cm  
\$2,500



6.  
**Bluegold**, 2021  
Oil on canvas  
101 x 76 cm  
\$2,500



2.  
**Rottnest seagrass**, 2021  
Oil on canvas  
76 x 101 cm  
\$2,500



7.  
**Pebble mosaic**, 2020  
Oil on canvas  
101 x 76 cm  
\$2,500



3.  
**Sunglazed rocks,**  
**Cabarita Beach NSW**, 2021  
Oil on canvas  
76 x 101 cm  
\$2,500



8.  
**Afternoon light,**  
**Cabarita Beach NSW**,  
2021  
Oil on canvas  
101 x 76 cm  
\$2,500



4.  
**Deep shade,**  
**Cabarita Beach NSW**, 2020  
Oil on canvas  
101 x 76 cm  
\$2,500



9.  
**Rocks in space**, 2021  
medium  
101 x 76 cm  
\$2,500



5.  
**Sunlit rocks,**  
**Cabarita Beach NSW**, 2021  
Oil on canvas  
101 x 76 cm  
\$2,500



10.  
**Elizabeth Beach NSW**,  
2021  
medium  
101 x 76 cm  
\$2,500



11.  
***Diggers Camp sunset***, 2021  
medium  
76 x 76 cm  
\$2,200



14.  
***Glance of sunlight,***  
***Cabarita Beach NSW,***  
2020  
Oil on canvas  
76 x 101 cm  
\$2,500



12.  
***Blue veins,***  
***Diggers Camp NSW,*** 2021  
Oil and ink on canvas  
76 x 76 cm  
\$2,200



15.  
***Pencil pebbles,*** 2021  
Pencil on paper  
56 x 42 cm  
\$900



13.  
***Blueschist,*** 2021  
Oil on canvas  
101 x 76 cm  
\$2,500



16.  
***Rock platform,***  
***Forresters Beach NSW,***  
2021  
Oil on canvas  
101 x 66 cm  
\$2,500

---

### Artist's Statement

This new series explores the jagged coastal edge of our continent where the crust is exposed by the sea. My aim, as always, is to connect with the spiritual power of landscape. Locations are primarily on the coast of NSW, which contains some of the oldest known geological formations on earth. Following on from my 2020 solo show *Yunta Landscapes*, which featured the vast landscapes and ancient rock formations of the South Australian outback, the coastal landscapes in this new series are vastly different from but intrinsically connected to the outback – both physically and spiritually.

---

Bruce  
Daniel  
Artist



brucedanielartist



brucedanielartist

<https://brucedaniel.art/>

<https://artistsonart.art/>



*Willoughby City Council is gratefully acknowledged for the provision of Art Space on The Concourse.*



THE CONCOURSE