



Ecology of Identity

INCINERATOR ART SPACE

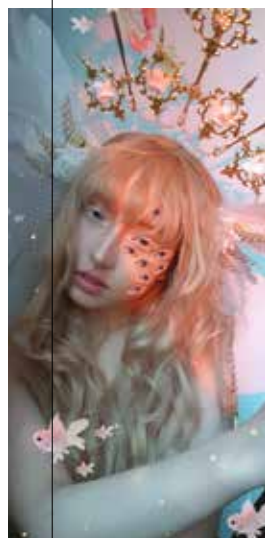
28 FEBRUARY – 17 MARCH

10am to 4pm, Wednesday to Sunday

▲ Michele Edinger and Stefania Riccardi delve into the intricate concept of self-identity as a multi-faceted construct shaped and influenced by generations past and present.

Contact: Michele Edinger on 0417 988 882 or michele.e@me.com

ABOVE: Michele Edinger, *Sweet Asylum*, 2023, stoneware



Smart Expressions 2024

ART SPACE ON THE CONCOURSE

29 FEBRUARY – 24 MARCH

11am to 5pm, Wednesday to Sunday

▲ Willoughby City Council presents an exhibition of student artworks selected from the 2023 NSW HSC practical examination in Visual Arts. Celebrating the artistic talents and achievements of young people, the exhibition features a selection of artworks from six local high schools.

Contact: Cassandra Hard Lawrie on 9777 7972
or Cassandra.Hard-Lawrie@Willoughby.nsw.gov.au
LEFT: Lucian Chappell, *Cherish the last child within*, 2023, photomedia



THE CONCOURSE

Art Space on The Concourse

409 Victoria Avenue
Chatswood NSW 2067
(next to Box Office)

COVER IMAGE: from *Passage of Night: Luminary Rising*, Meng-Yu Yan, *Faces of the Moon (Full Moon)* (detail), 2023, digital photography

Art Space on The Concourse and Incinerator Art Space are cultural facilities provided by Willoughby City Council.

M: 0401 638 501

INCINERATOR ART SPACE

2 Small Street
Willoughby
NSW 2068

www.willoughby.nsw.gov.au/arts



Subscribe to
Willoughby Visual Arts

Scan the QR code to receive our e-Newsletter.

WILLOUGHBY VISUAL ARTS

JANUARY – MARCH 2024

ART SPACE ON THE CONCOURSE
INCINERATOR ART SPACE



WILLOUGHBY
CITY COUNCIL



Collecting Emotions

INCINERATOR ART SPACE

17 JANUARY - 4 FEBRUARY

10am to 4pm, Wednesday to Sunday

Closed Australia Day, 26 January

▲ An exhibition by Monika Maria Klenner, which captures emotions with form, colour, and texture in her paper-based artworks. Klenner draws inspiration from her everyday surroundings such as home, the garden, the wilderness, or the beach.

Contact: Monika Maria Klenner on 0432 765 481 or monika.klenner@gmail.com
LEFT: Monika Maria Klenner, *Don't Dare To Argue*, 2021, mixed media on paper



Line & Leaf

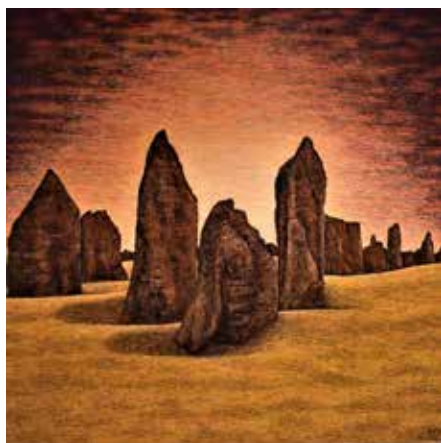
INCINERATOR ART SPACE

7 - 25 FEBRUARY

10am to 4pm, Wednesday to Sunday

▲ A group exhibition by Mark Rowden and Drew Truslove. Their ink drawings and intricate prints explore history and art, rediscovering the beauty and cultural significance of the Australian landscape.

Contact: Drew Truslove on drew.truslove@gmail.com
ABOVE: Drew Truslove, *Flat Rock Gully 9th Angle*, 2022, ink on paper



Mother Nature

ART SPACE ON THE CONCOURSE

17 - 28 JANUARY

9am to 5pm, Monday to Sunday
(Extended Open Hours)

▲ An exhibition of paintings by Seya Hashemi, which are based on his dreams. Hashemi believes that by continually utilising his imagination and transferring it onto the canvas, he can bring his dreams to reality.

Contact: Seya Hashemi on 0404 730 346 or Ashgla22@gmail.com
ABOVE: Seya Hashemi, *The Pinnacle Desert*, 2021, acrylic on canvas



Passage of Night; Luminary Rising

ART SPACE ON THE CONCOURSE + THE CONCOURSE OUTDOOR AREA

1 - 25 FEBRUARY

11am to 5pm, Wednesday, Thursday and Sunday

11am to 8pm, Friday and Saturday (Extended Open Hours)

▲ A group exhibition examining the significance of the moon and how it is reflected across cultures. This exhibition explores diverse historical, cultural and religious relationships to the moon, extending the Lunar New Year celebration to other communities. Co-curated by Cassandra Hard Lawrie and Rachael Kiang.

Artists: Frankie Chow, Maryanne Coutts, Carmen Glynn-Braun, Emma Hicks, Karen Lee, Lindy Lee, Pamela Leung, Lawrence Liang and Jordan Ritchie, Miho Watanabe and Meng-Yu Yan
Contact: Cassandra Hard Lawrie on 9777 7972 or Cassandra.Hard-Lawrie@Willoughby.nsw.gov.au
ABOVE: Maryanne Coutts, *August Moon*, 2022, animation still from animated ink drawing

Passage of Night; Luminary Rising is part of

