

## Artarmon Local Town Centre Streetscape Upgrade

26 May 2023

Dear Resident / Business Owner

Starting tomorrow 26<sup>th</sup> May we will be removing some trees along Hampden Road to continue the next stage of works.

To know more about the landscaping plans and schedule, please visit the project page:

<https://www.willoughby.nsw.gov.au/Council/News-and-media/Construction-begins-on-Artarmon-local-centre-streetscape-upgrade>

### When is this taking place?

Running for approximately 4 businesses days, from 7:00am to 5:00pm in 3 stages you will notice some changes to pedestrian management on Hampden Road.

### What changes should I expect?

You may need to use an alternate footpath on the other side of Hampden Road so please observe signage indicating footpath closures and directions from a pedestrian management person.

#### **Stage 1:**

Eastern footpath will be closed from corner of Brand Street to pedestrian traffic signals near Broughton Road.

#### **Stage 2:**

Eastern footpath will be closed from the lift to the station to the under pass to Wilkes Avenue. Access to the lift and under pass to the train station will still be available.

#### **Stage 3:**

Eastern footpath will be closed from south of the lift to south of Jersey Road/Hampden Road intersection.

**\*Each stage is estimated to be 1 to 1.5 days (weather permitting) unforeseen circumstances may impact how long each stage. Please observe visual signs and pedestrian management people who will direct you.**

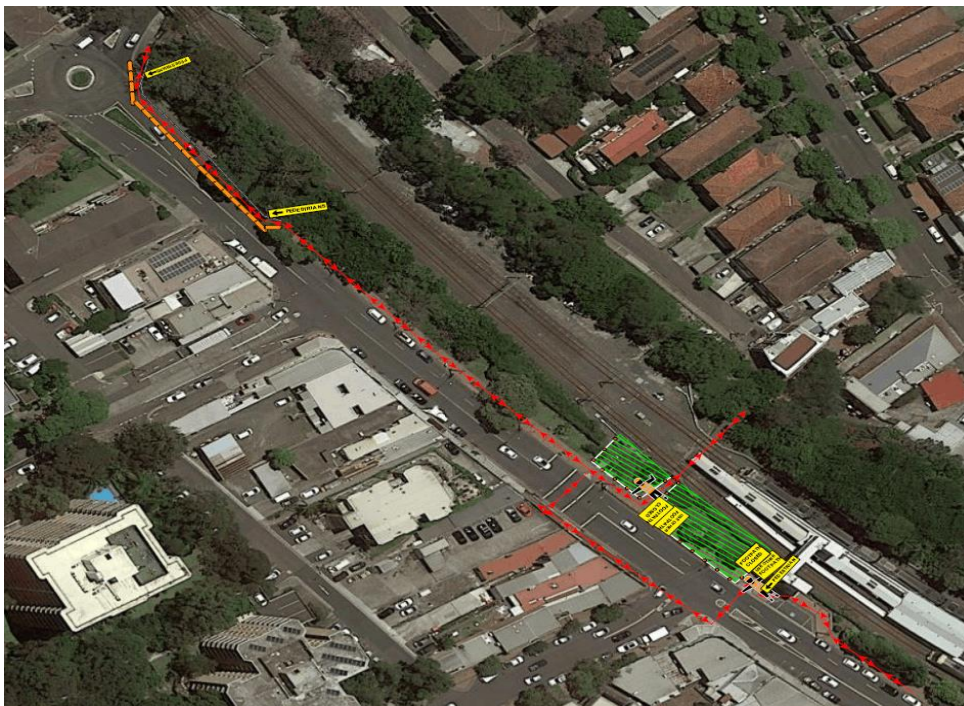
### Where is this taking place?

From Brand Street and Hampden Road intersection to just past the intersection of Jersey Road and Hampden Road.

## Stage 1

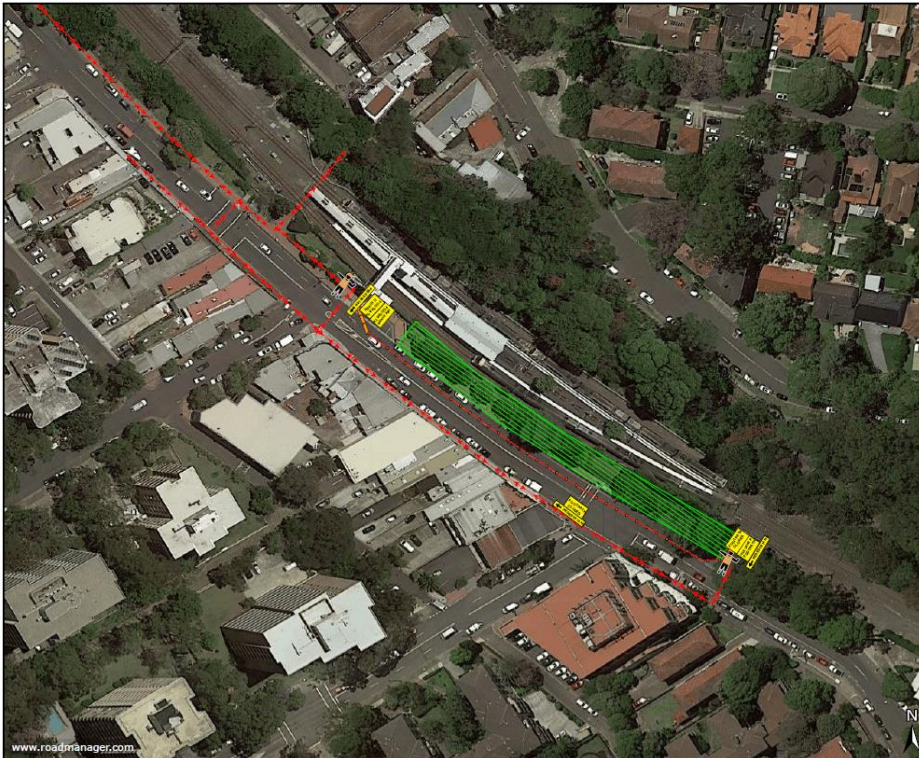


## Stage 2





### Stage 3



#### Legend for images:

Green section – where works are taking place

Red dashes with arrows show – where you can walk

Red dashes with dots – foot path closed

Person in orange – pedestrian management warden

#### Where you can get more information?

If you have any questions or concerns, please contact CA&I's dedicated community liaison officer Menios Mitakidis on 0404 090 147 or [menios\\_mitakidis@ca-i.com.au](mailto:menios_mitakidis@ca-i.com.au)