



WILLOUGHBY CITY COUNCIL

Naremburn Local Centre Streetscape Upgrade



Agenda



- **Background**
- **Consultation results**
- **Design Changes**
- **Design Considerations/ Constraints**
- **Next Steps**
- **Plans**

Background



- **June 2020: Local Centre Strategy 2036** - Aims to promote a network of thriving, attractive and distinctive Local Centers throughout the LGA – underwent extensive Community consultation.
- **March 2022: Consultation** - Co-Design Workshop
- **December 1 to 24 2022: Consultation** - Workshop on 2 Concept Designs for the design space
- **Feb 2023: Local Traffic Committee** - Parking and Vehicle Circulation Plan
- **March 2023: Information Session** – Design Progress

Consultation Results



- Supported
 - Shade and Seating
 - New shaded seating areas
 - Traffic Circulation
 - Safer pedestrian and bicycle accessibility to Local Centre
 - One way vehicle circulation through Quiamong Street
 - Separated Southbound bike lane
 - Parking
 - Maintain parking levels in Local Centre
 - Additional Bike parking
 - Ground Levels
 - Level Lease area
 - Use of design elements for big level changes such as seating and leaning bench/ high table.
 - Willoughby Road Barrier
 - Sound, visual, and physical barrier to Willoughby Road
- Not supported
 - Movement with exposure to Willoughby Road
 - Angled Parking West of mid way speed hump on Rohan Street

Design Changes



- Crossing at Entrance
 - Transport for NSW (TfNSW) would not approve zebra crossing at this location
 - Council revised crossing route to provide safer access to the Local Centre
- Parking
 - Additional Bicycle Parking in Rohan Street
 - Maintain parallel parking west of Rohan Street mid-way speed hump by removing angled parking proposal.
- Landscaping
 - Additional Trees
 - Increased garden bed area

Design Considerations/ Constraints



- Fixed construction budget: \$750k
 - Resources: Staff/ trades
 - Materials: Availability and cost
- Approvals:
 - Transport for NSW (TfNSW) – Vehicle Circulation changes
 - Local Traffic Committee – Parking
 - Service Authorities (Sydney Water, Jemena, etc.)

Next Steps

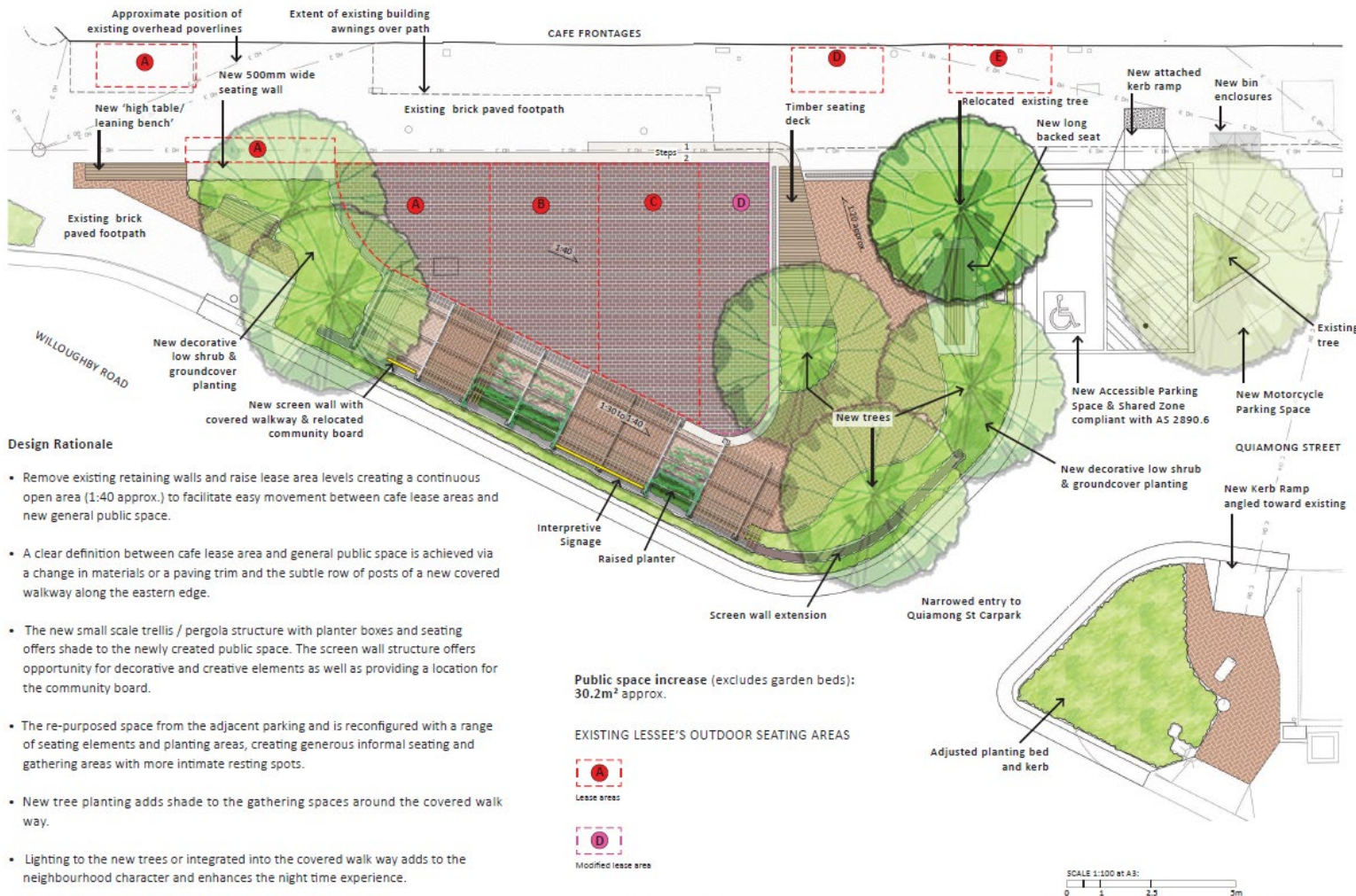


- **March 2023:** Community information session
- **July 2023:** Final documentation and obtain external statutory authority approvals
- **August 2023:** Tender Period
- **September 2023:** Construction commence
- **March 2024:** Construction Complete
- **Ongoing:** stakeholder consultation by project team with stakeholders
 - Key Contact: Jessica Bain, Community Liaison Officer

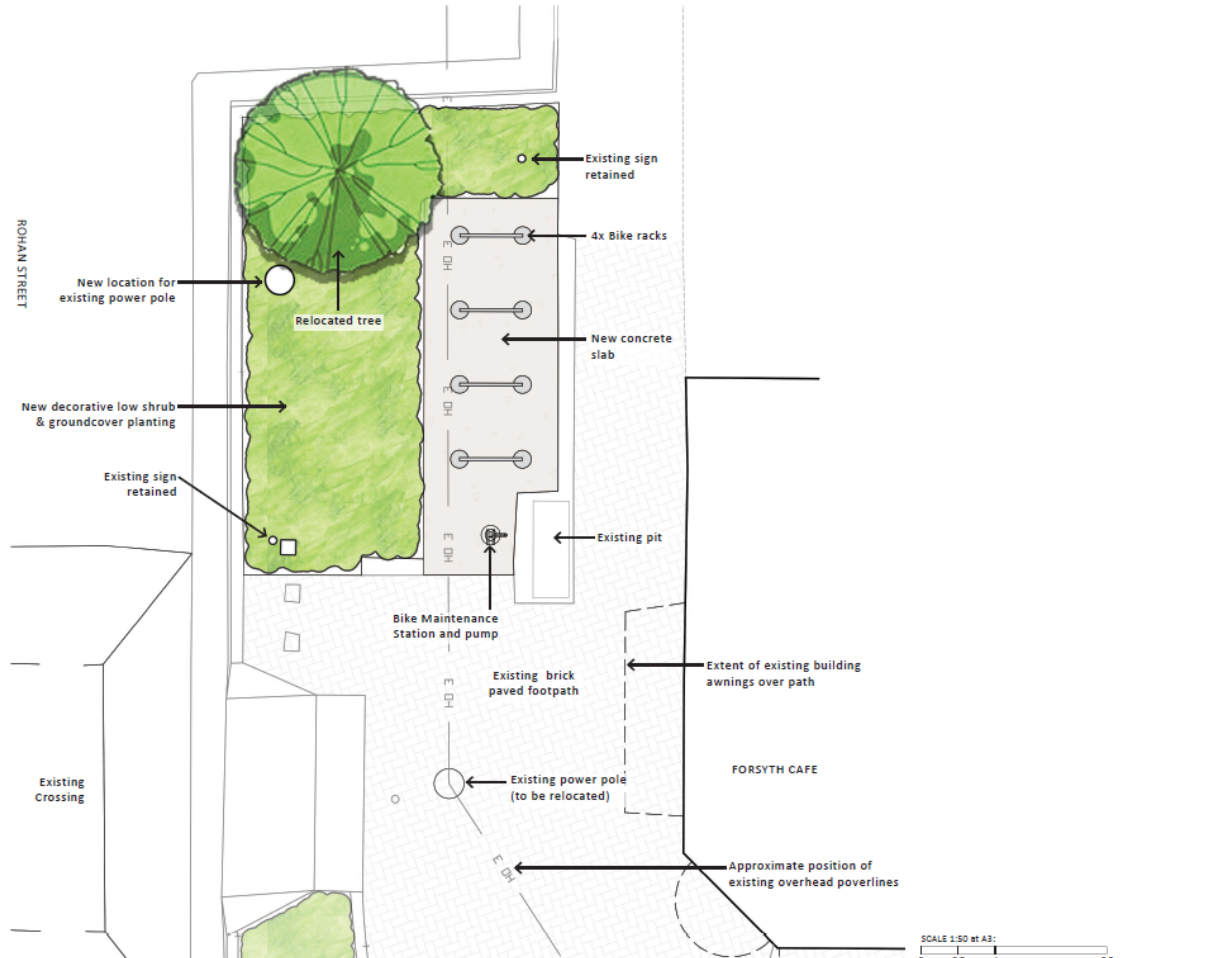
Perspective



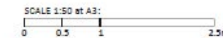
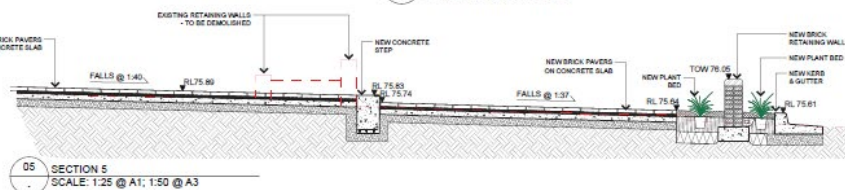
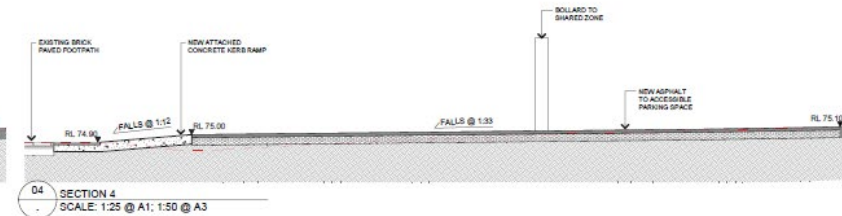
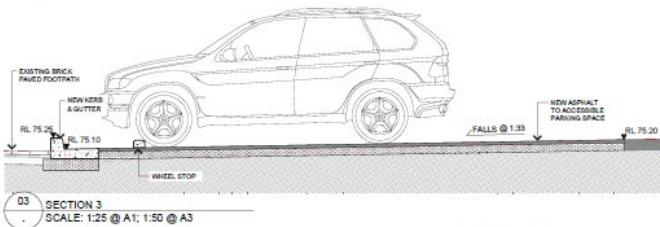
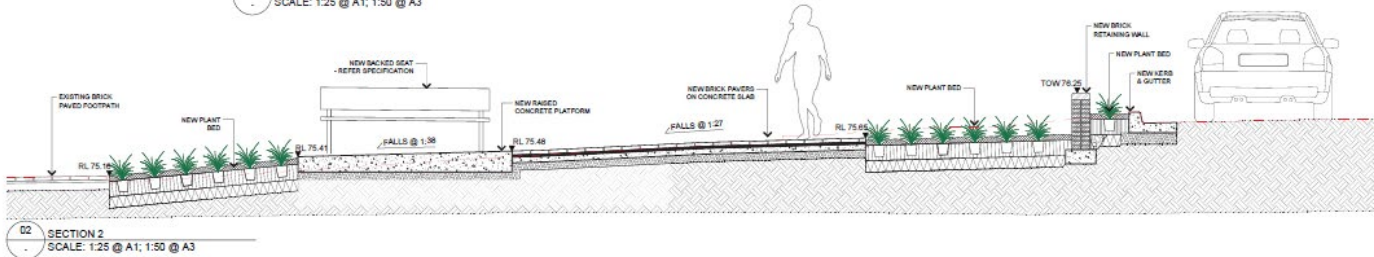
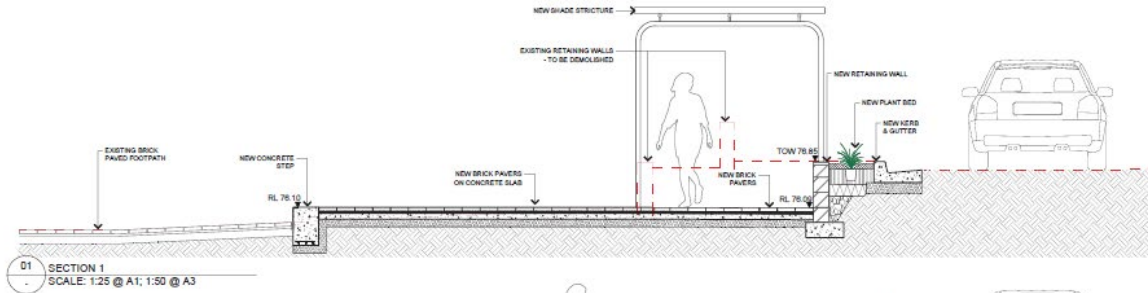
Design Documentation



Rohan Street Bicycle Parking



Sections



Materials Palette

Seating and planters



Ground surface materials



- PGH Wirecut- Pompeii with salvaged bricks from site.
- To new pedestrian areas and areas to be made good.
- Herringbone pattern as per existing paved areas.
- Bowral50- Bowral Blue.
- To new lease area.
- Stretcher bond pattern.
- Bowral50- Brahman Granite.
- To feature trim of new lease area.
- Stretcher bond pattern.



Coloured Concrete

Trees



Banksia integrifolia - 8x5m
Coast Banksia



Elaeocarpus eumundii- 10x5m
Smooth leaved Quandong



Ulmus parvifolia- 13x10m
Chinese Elm (Relocated- Quiamong St)



Lagerstroemia indica x fauriei 'Natchez' - 6x6m
Crepe Myrtle (White) (Relocated- Rohan St)