

INCINERATOR ART SPACE

2 Small Street, Willoughby NSW 2068
www.willoughby.nsw.gov.au/arts

EXHIBITION GUIDE AND HOW TO APPLY





Incinerator Art Space and *Exoskeleton Lift* by Richard Goodwin, 2013. Photograph: Mim Sterling

CONTENTS

Introduction

History

Hiring

Features

Hirer Application &
Assessment Process

Exhibition Guide

Selection Criteria

Floor Plan

Please direct enquiries to

Curator & Visual Arts Coordinator,
Arts and Events Unit,
Willoughby City Council on

02 9777 7972 / 0401 638 501 or
VisualArt@Willoughby.nsw.gov.au

INTRODUCTION

Willoughby City Council provides a range of facilities and programs to support and develop the visual arts. Council provides the community with two exhibition spaces, each with their own defined artistic and cultural direction: Art Space on The Concourse and Incinerator Art Space. The key aim is to contribute to the unique cultural identity of the Willoughby City local government area and the Northern Sydney Region.

Incinerator Art Space opened in 2011. Its annual program presents up to three Council-curated exhibitions and high quality visual arts events. It is available at other times for hire to artists, arts groups and curators to professionally display exhibitions which meet the Incinerator Art Space Exhibition Guidelines and Hire Agreement Terms.

The Incinerator is an iconic and heritage-listed building, designed by Walter Burley Griffin. It retains its strong Modernist style of architecture. The interior has been sensitively renovated to create a professional gallery space that lends itself to exhibit a broad range of contemporary art in a distinct environment. Incinerator Art Space strives to offer the community a hub for showcasing exceptional, innovative and timely visual art exhibitions.

The building also houses a café, making it an enjoyable arts destination.

**Incinerator Art Space opening hours are
Wednesday to Sunday, 10am – 4pm.**

This document is to be read in partnership with the Hire Agreement Terms.

HISTORY

The Incinerator was designed by Walter Burley Griffin and Eric Nicholls and operated from 1934 to 1974. It is one of two remaining municipal Incinerator buildings in NSW and is listed on the NSW Heritage Register. It is located between the popular Hallstrom Park and the busy Willoughby Leisure Centre, and adjacent to Bicentennial Park, Flat Rock Creek cycle way and pedestrian paths, and Henry Lawson's Cave and amphitheater.



Installation view of *Grit!* (2018) with works by 110% and Danny Morse. Photo: Ian Hobbs

HIRING

This iconic building has been sensitively restored to accommodate two separate levels. The street level is a café and the art space is located on the lower level with an adjacent courtyard. External stairs and a lift access the two lower levels. This unique gallery space lends itself to exhibit a broad range of contemporary art and strives to showcase innovative visual art exhibitions.

Incinerator Art Space provides a unique exhibition space for artists, arts groups and curators to professionally display a diverse range of high quality contemporary visual arts and is available to hire for exhibitions which meet the Incinerator Art Space Exhibition Guidelines and Hire Agreement Terms.

HIRE PERIOD

Incinerator Art Space is available for hire for three weeks only. (Two week hire may be available on request). This includes one day (Tuesday 9am – 5pm) for installation and one day (Monday 9am – 5pm) for de-installation. No installation can occur outside these times.

FEATURES

- Spacious exhibiting area with high ceilings, natural light and pristine white gallery walls
- Retains historic elements giving the art space a modernist industrial character
- Professional gallery hanging system
- Professional lighting system
- Suspension rack for hanging 2D and 3D artworks 'in the round'
- Outdoor courtyard area
- Plinths (various sizes)
- Three dehumidifiers
- Two ladders (1.8 and 2m)
- Trolley for moving heavy items
- Three trestle tables
- Accessible toilet
- Small kitchen with bar fridge and microwave.

HIRE FEES

Commercial/Private/Education Institution
– \$896 per week (incl. GST).

Community Organisation/Group Exhibition or Artist Group Show – \$644 per week (incl. GST).

Individual artist – \$420 per week (incl. GST).

Category D:
Full Concession. See Council's Community Facility Concessional Hire Policy which outlines the conditions under which a full concession may be available.

All groups listed above must pay a bond of \$200.

Please Note: These rates reflect the fees for the financial year 2023/24, with fees reviewed annually. There will be a standard minimal increase each financial year, starting from 1 July. Upon inquiry, a Council officer will confirm your rates and charges.



Installation view of *Domestic Goddess* (2017) with works by Wendy Fairclough and Kirstie Rea courtesy of Sabbia Gallery.
Photo: Document Photography

HIRER APPLICATION & ASSESSMENT PROCESS

Once a year, advertisements are placed on Council's website and through relevant arts organisations and media inviting applications from artists, curators and arts groups.

Applicants are;

- To use the online application form. A hardcopy application form is available on request for artists without computer access.
- Are encouraged to discuss their proposal with the Curator & Visual Arts Coordinator prior to submitting the application form.
- To be a person over the age of 18 who would be responsible for payment of hire fees and the other conditions outlined in the Hire Agreement Terms.

The application will be considered by the Arts and Events Unit against the selection criteria and the applicant will be informed of the decision in writing.

Installation view of *Algorithmic Pareidolia* (2017) by Wade Marynowski, featuring *Synthesiser-Robot* (*Synth-Bot*), UR 3 robotic arm, custom built stands, Ableton Push, Mac mini, stereo speakers and audio.
Photo: Ian Hobbs



EXHIBITION GUIDE

The Exhibition Guide outlines Council's curatorial intent for contemporary visual art exhibitions held at the space. Exhibition applications must address the guidelines and criteria outlined below.

Exhibition Guidelines and Objectives:

- To provide clear guidelines for artists, curators, arts groups and organisations to contribute to an innovative and diverse annual exhibition program at Incinerator Art Space.
- To ensure exhibitions are of a high quality and presented in a professional manner in accordance with the selection criteria, exhibition guidelines and conditions of use.
- To support and promote artists, arts groups and curators who are working across a range of media and are able to contribute to the unique cultural identity of the visual arts in the Northern Sydney Region.
- To provide opportunities for the Willoughby City Council community and its visitors to engage with contemporary visual art in the Northern Sydney Region.

EXHIBITION GUIDELINES STATEMENT

Council will undertake to:

- Provide a varied exhibition program that balances local with visiting artists and arts groups and creates interest for residents and visitors, as well as a range of subject matters and disciplines.
- Receive proposals for exhibitions that aim to explore and communicate the diversity of contemporary visual art, are original in concept, of high presentation quality and contribute to the cultural identity of the Northern Sydney Region.
- Support and promote artists and arts organisations who are working across a range of media.
- Develop public programs which may include artist talks, special events, workshops and educational activities as appropriate to the exhibition.

Willoughby City Council reserves the right to refuse a proposal or an exhibit considered inappropriate for viewing by the wide range of visitors to the space.

It is not possible to change the exhibition concept or proposal once the application has been selected for exhibition.

EXHIBITION SELECTION CRITERIA

- In addition to addressing the above Guidelines, applications must include:
- **A sound curatorial proposal** providing a clear description of the exhibition concept, a physical description of the exhibition, the proposed outcomes and its relevance to contemporary visual arts practice and/or the Willoughby community.
- **A proposed exhibition plan and budget**, including use of the art space, walls, plinths or special display requirements. You must also demonstrate an understanding of exhibition installation.
- **A current CV or artist biography** outlining exhibition history, publications and any relevant education qualifications. One CV per exhibiting artist.
- **For a solo exhibition** up to 10 images of past and proposed artworks. Images are to be in JPEG format only and sized between 500KB and 1MB per image.
- **For a group exhibition** up to 20 images of past and proposed artworks and formatted and sized as above.
- An image list detailing; artist, artwork title, year and medium.
- Online links to video artworks, if proposing an exhibition with predominantly this media.
- Preferred months for exhibition. Check with the Curator prior to nominating dates. Exhibitions are 3 weeks in duration.

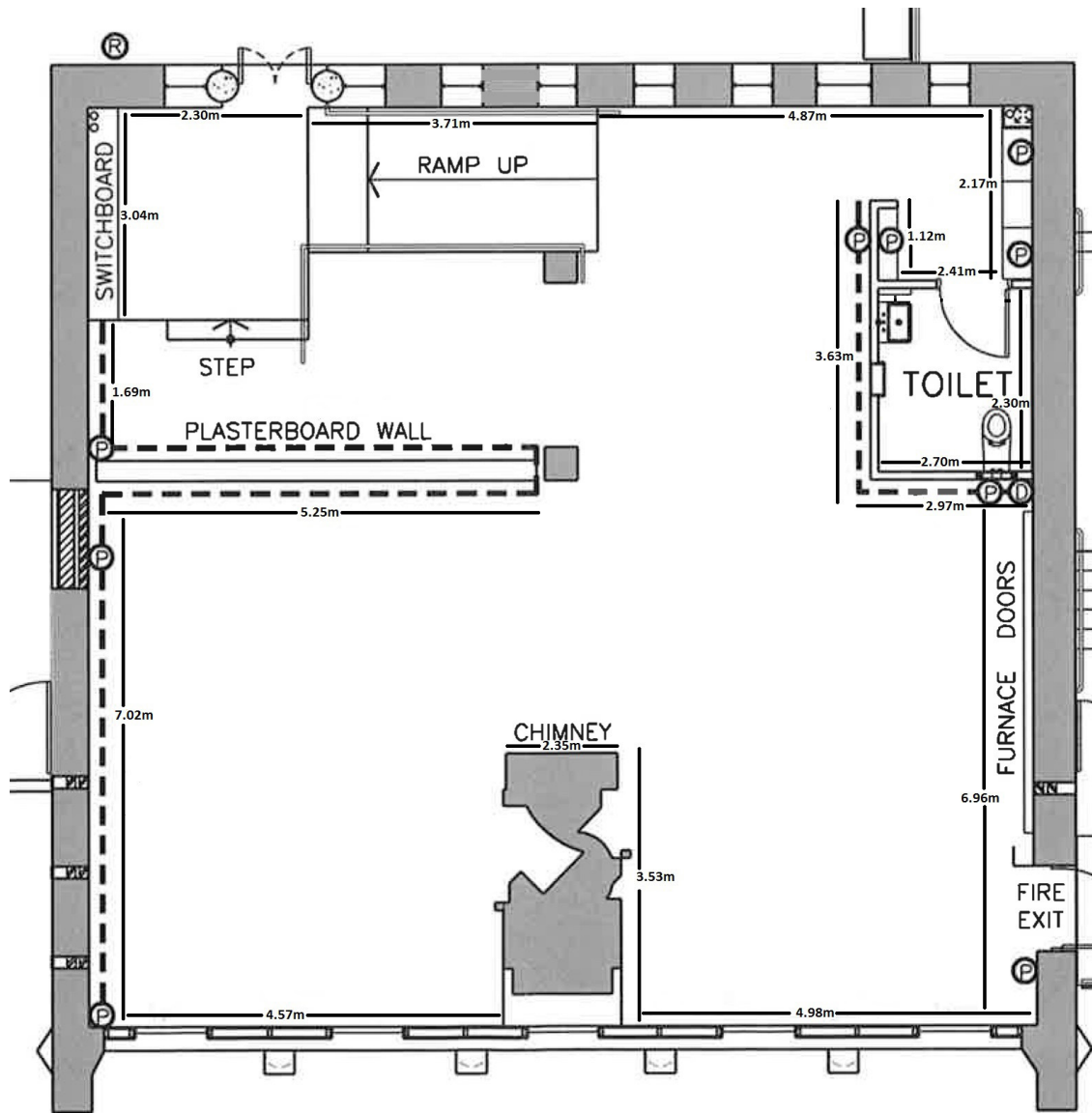
Further considerations which may impact on the assessment of an application are:

- How the proposal contributes to the overall exhibition program at Incinerator Art Space.
- The capacity to meet all requirements in this document and the Hire Agreement Terms (i.e. hiring costs, insurance, installation, staffing, standard of catalogues and other printed materials).



Exterior view of the
Incinerator Art Space

FLOOR PLAN



Please note: Dimensions & measurements provided in the plan are intended to serve as an approximate guide only. It is the responsibility of the Hirer to confirm any dimension or measurement that may impact on the planning of the exhibition.